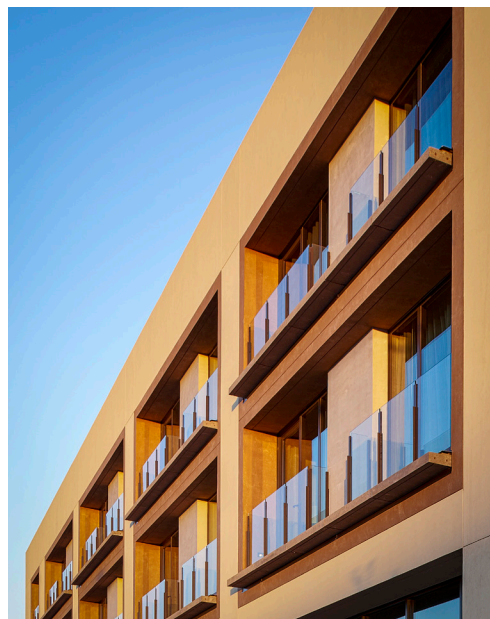




WINCO PROJECT PROFILE

Facing the Elements with Style at Albuquerque's Hotel Chaco

Hotel Chaco in Albuquerque, NM, is a celebration of the people and history of Chaco Canyon, once the cultural epicenter of the Pueblo civilization. The five-story, 118-room boutique hotel was designed by internationally acclaimed architectural firm Gensler. After meeting with owners Heritage Hotels & Resorts, Inc. and visiting the Chaco ruins for inspiration, every detail of the project — from Navajo wool to bronze metalwork to the offset stone masonry — is a modern interpretation of the indigenous culture that thrived in the Albuquerque region between 900-1500 AD. And behind all this beauty, the Hotel Chaco was built to weather the elements — hot sun, blowing dust, and large temperature swings from day to night.





WINCO PROJECT PROFILE

THE CHALLENGE

One of the biggest concerns in designing the Hotel Chaco was finding products appropriate for such a challenging environment. With the intense sun and overnight temperatures dropping to well below freezing, doors and windows had to be tight enough to provide protection from the environment without blocking out views or looking out of place.



SOLUTION

Winco came prepared for the weather with products providing performance, durability and customized style.

For each guest room's outdoor balcony, Southwest Glass & Glazing installed Winco's NC82 Terrace Doors and sidelights. These high quality doors provide long-lasting, beautiful and secure access while blurring the line between indoor and outdoor space. By reducing the amount of aluminum required to maintain the structural integrity of the door, Winco's framing system and UV resistant finish blends well with the hotel's emphasis on energy efficient technology.

"Winco doors keep it tight," says Gerry Cooper, Winco's Colorado sales representative. "With so many guests opening and closing these doors, we needed a solid door that can handle the dust, heat, snow and cold while flowing nicely with the Native American aesthetic. We are pleased with the outcome."

In addition to the terrace doors, Winco's Series 1450H Projected/Casement windows were also used on the project. Their fully mitered 2" deep overlap sash configuration with fully sealed corners and dual weather-stripping address any concerns about air or water infiltration around the windows.

Both the terrace doors and window systems are trimmed with a weather-resistant, 70% Kynar finish in an earth-tone bronze to blend in with the exterior and provide long-lasting UV protection.

Project Team:

Hotel Chaco, Albuquerque, NM

Owner:

Heritage Hotels & Resorts, Inc., Albuquerque, NM

Architect:

Gensler, Los Angeles, CA

General Contractor:

Klinger Constructors, LLC, Albuquerque, NM

Glazing Contractor:

Southwest Glass & Glazing, Albuquerque, NM

Window Manufacturer:

Winco Windows, St. Louis, MO

Sales Rep:

Gerry Cooper, Cooperform, Inc., Colorado Springs, CO