



# WINCO PROJECT PROFILE

VOLUME 5, 2013

## Energy Efficient Architectural Aluminum Windows Elevate Building Performance While Preserving Campus Aesthetics

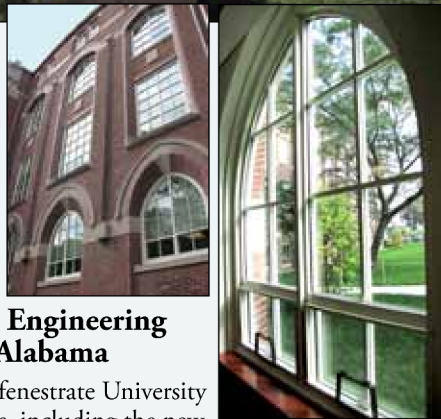


*Winco maintains strong ongoing relationships with leading colleges and universities by consistently providing quality manufacturing and design, true to their architectural heritage. Make Winco your choice for new construction and historical renovation projects.*

### Harkins Hall, Providence College in Rhode Island

The very first campus building at Providence College, founded in 1917, Harkins Hall today houses administrative offices as well as lecture halls and classrooms. Collegiate Gothic Style architecture and time restrictions dictated summer-month replacement of over 450 windows, including complex Gothic and round-top shapes.

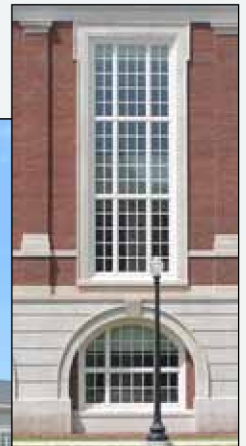
- Original steel TDL windows were replaced with Winco Series 3250 architectural aluminum windows with narrow sightlines and SDL muntins
- Existing steel window frames were left in place to facilitate window replacement and save money
- Panning systems and snap trims permitted replacement windows to sit on top of -- and cover up -- the existing window frames
- Glass system: Clear PPG SolarBan60 #2
- Azon Azo-Braded thermally broken sash and frame
- Finish: 70% Kynar, Ivory



### The Science and Engineering Building, U. of Alabama

Winco continues to fenestrate University of Alabama buildings, including the new Science and Engineering Complex Phase IV section, opening in 2013. The three-story brick structure includes more than 100,000 sq. ft. of research laboratories, faculty offices, graduate student work areas, conference and meeting facilities.

- 479 Winco Series 1450S Simulated Hung windows were furnished
- Custom scroll panning system and sloped glazing bead
- AW-80 windows with 4-inch frame depth
- Glass system: Insulated glass with energy-efficient simulated divided lite muntins
- Azon Azo-Braded thermally broken sash and frame
- Finish: 70% Kynar, Antique White

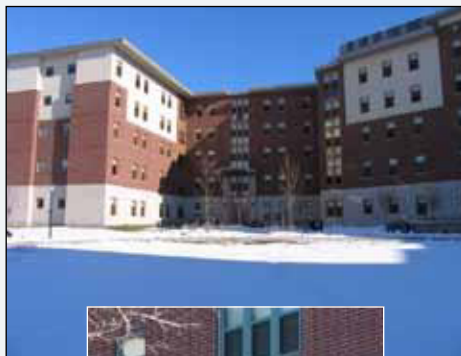


# See Why Winco Is Favored Everywhere For Campus Call-Back Work

## Windows for three new residence halls, U. of Rhode Island

In less than 10 years, Winco replaced obsolete windows in two major university buildings. Then, in 2009, the manufacturer was selected to make high-performance aluminum windows for Eddy, Garrahy and Wiley Halls, a \$74 million combined project, and the largest building program in the university's history. The three residence halls provide housing for 800 students.

- Winco Series 4410 single-hung windows were furnished
- AW-80 windows with 4-inch frame depth
- Glass system: Clear PPG SolarBan60 #2
- Custom balance and aluminum screen
- Azon Azo-Braded thermally broken sash and frame
- Finish: 70% Kynar, "Chaparral" and "Salad Leaves" Paint



## The new Wohl Center residence hall, Washington U. in St. Louis

Winco steel replica windows combine the strength of durable aluminum profiles with the narrow sightlines that have met local and National Park Service standards for architectural replication of original steel.

- All windows feature sloped historical glazing and applied muntins
- Series 4410 single-hung AW60 windows feature 4-inch frames
- Series 1150S casement AW80 windows feature 2-inch frame depth
- Glass system: simulated true divided lite (SDS) with 1-inch dual glazed Solarban-60 low-e glass
- Azon Azo-Braded thermally broken sash and frame
- Custom finish: 70% Kynar, Revere Gray

## Visual accuracy with superior thermal performance.

All Winco architectural windows can be furnished with simulated divided lite (SDL) sash. SDL offers a convincing substitute for the buildings' original true divided lite windows. SDL windows use spacers between the panes of the insulated (IG) unit, aligned with three-dimensional muntin/grids on the interior and exterior glass surfaces. It is a sash that has met local and national historic preservation visual standards for thermally improved high-performance aluminum windows. And SDL means better energy performance at less cost than multi-pane true divided lite windows.



## Winco Window Company

6200 Maple Ave., St. Louis, MO 63130  
• 800-525-8089 • FAX: 314-725-1419

[www.wincowindow.com](http://www.wincowindow.com)

