

Winco
6200 Maple Avenue
St. Louis, MO 63130

Anodic Finish all exposed areas of aluminum windows and components with electrolytically deposited color in accordance with Aluminum Association Designation AA-M10-C22-(*).

AADesignation	Description	Mills	AAMA Guide Spec.
A41	Class I Clear Anodized	0.7 or Greater	611-98
A31	Class II Clear Anodized	0.4 or Greater	611-98
A44	Class I Color Anodized	0.7 or Greater	611-98
A34	Class II Color Anodized	0.4 or Greater	611-98

Available colors are clear, light bronze, medium bronze, dark bronze, and black.

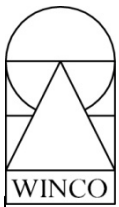
Anodized Color Range Sample – *The anodized color samples indicate WINCO's anodized color range; they are not intended for color selection. Color matches are available upon request. Contact your local WINCO Representative for pricing and availability.*

Color Variation: *Anodized colors are subject to color variation from piece to piece. With lighter colors, the human eye perceives more variations in chromaticity and hue (two key components of color). This variation is far less noticeable with darker colors. Lighter colors also develop very quickly in the anodizing tanks. Sometimes, just a few extra seconds in the tank will make a difference between a light and medium bronze color.*

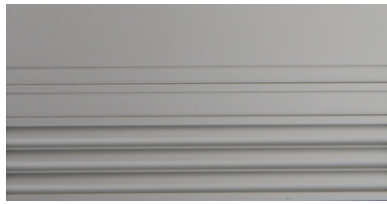
When aluminum is produced, each lot has slight differences: alloy constituents, temper, extruded temperature, grain, rolled temperature, etc. These slight differences can have a big effect on anodizing color. For example, material from one lot anodized light bronze might produce a color to the light side of a range. Whereas material anodized from another lot might produce a color near the middle of the range, while both lots were anodized using the exact same process and tank time.

Range samples are meant to convey the degree of variation that is possible. Color is just one of the aspects of appearance and not even color can be measured on a light-to-dark axis. What one might describe as "lighter," might really be "yellower." Producing a perfect match with light or medium bronze anodizing is impossible. Because so many variables exist, a certain degree of color variation is inevitable.

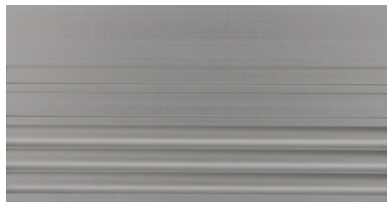
Due to limitations in the printing process, slight variations will occur between the colors in this chart and the actual colors. Samples are available upon request.



Winco
6200 Maple Avenue
St. Louis, MO 63130



204-R1 Class II Clear Anodized



215-R1 Class I Clear Anodized



311-2S Class I Light Bronze Anodized



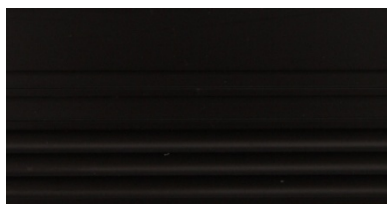
Range



312-2S Class I Medium Bronze Anodized



Range



313-2S Class I Dark Bronze Anodized



Range



315-2S Class I Black Bronze Anodized



Range

Due to limitations in the printing process, slight variations will occur between the colors in this chart and the actual colors. Samples are available upon request.