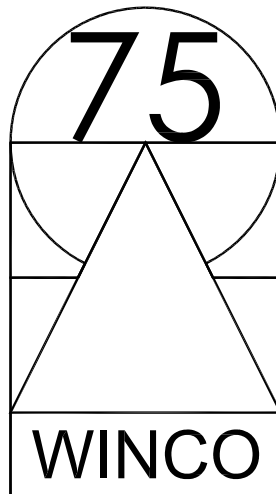
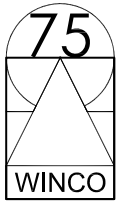


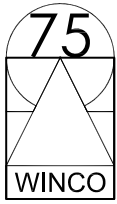
WINCO Window Company



*Installation
Instruction Manual*



Index:	_____	Page 2
General Product Notes:	_____	Page 3
Butt Hinges:	_____	Page 4
Installation without Trim:	_____	Page 5
Anchoring windows without Trim:	_____	Page 6
Sub-Frame Installation Steps 1 through 4:	_____	Page 7
Sub-Frame Installation Steps 5 through 10:	_____	Page 8
Sub-Frame Splicing:	_____	Page 9
Sub-Sill Splicing:	_____	Page 10
Sub-Frame installation concluded:	_____	Page 11
Typical side stack:	_____	Page 12
Mullion Installation with Trim Steps 1 & 2:	_____	Page 13
Mullion Installation with Trim Steps 3 & 4:	_____	Page 14
Mullion Installation with Trim Steps 5 & 6:	_____	Page 15
Mullion Installation without Trim:	_____	Page 16
Mullion Clips and Covers (full scale):	_____	Page 17
Blind Sash:	_____	Page 18
Notes:	_____	Page 19



General Product Notes

1) Receipt and Inspection of Material

Upon receipt of delivery, all material must be counted and inspected for any apparent damage. All visible damage must be noted at this time on the freight bill. If a freight claim is required, the receiving party's to contact the delivery carrier. If assistance is required, contact our shipping department at extension 232.

2) Product Storage and Protection

A) Material should be handled and moved carefully to avoid damage and /or racking of windows and their accessories.

B) WINCO products should be stored in a secure and dry area out of the elements which is safe from abuse from other construction trades.

C) Windows should be stacked in the storage are in the same position as they were shipped. Windows are not to be stored flat and/or on top of each other.

D) All products are to be stored in a manner where there will be no direct ground contact.

3) Field Adjustments and/or Modifications

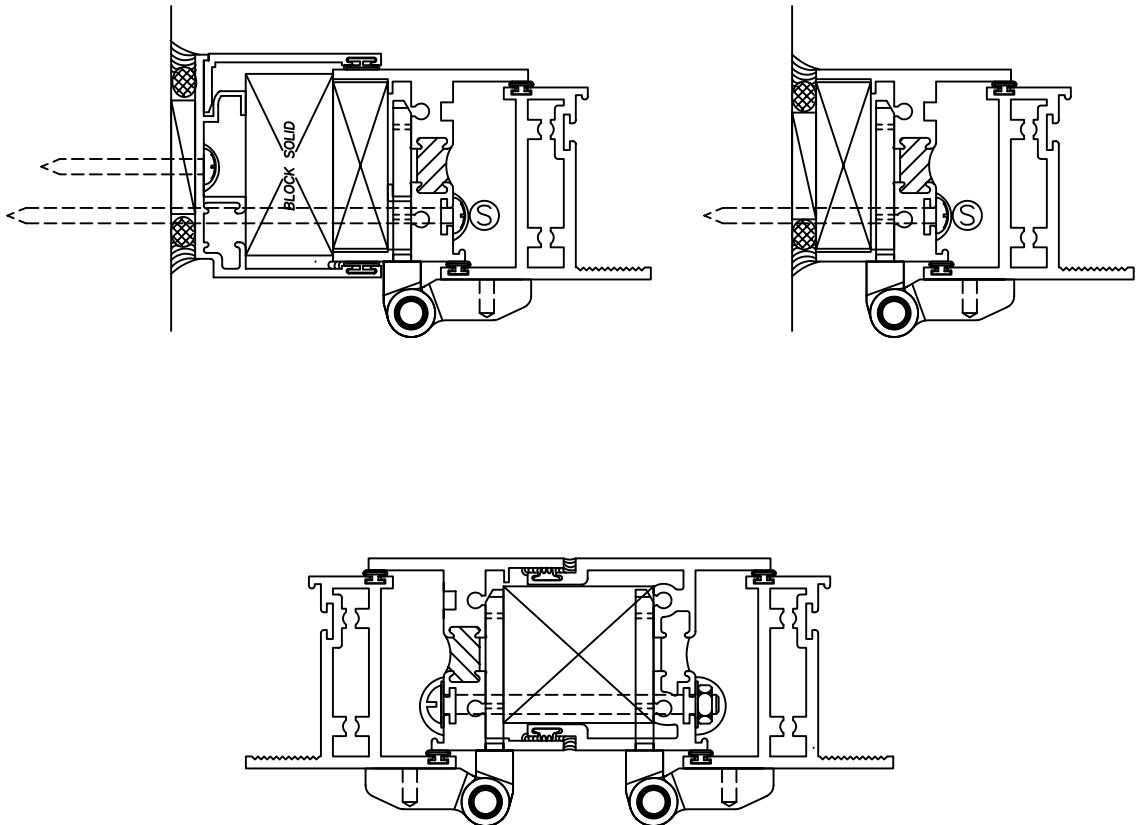
WINCO will not pay for any adjustments and/or modifications to our windows or their accessories by the purchaser of our products without prior written authorization from us. This is in accordance with WINCO's terms and conditions of sale.

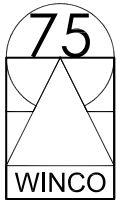
4) Cleaning

A) Windows should be protected from other trade's debris/products (i.e. plaster, cement, etc.).

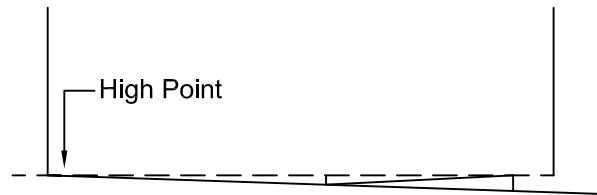
B) Cleaning compounds used to clean masonry structures are very harmful to our product's applied finishes and will cause permanent staining. These compounds and their residue should be removed immediately with mild soap and water mixture. You may refer to AAMA sections 609.1 85 and 610.79 for cleaning and maintenance of aluminum finishes.

NOTE: ALL CASEMENT WINDOWS MUST BE SECURELY ANCHORED AT JAMBS ON HINGED SIDE. ANCHOR THROUGH EACH HINGE. DO NOT BOW OR TWIST FRAMES WHEN ANCHORING. USE SHIMS AND/OR BLOCKING IF AND WHEN NECESSARY.

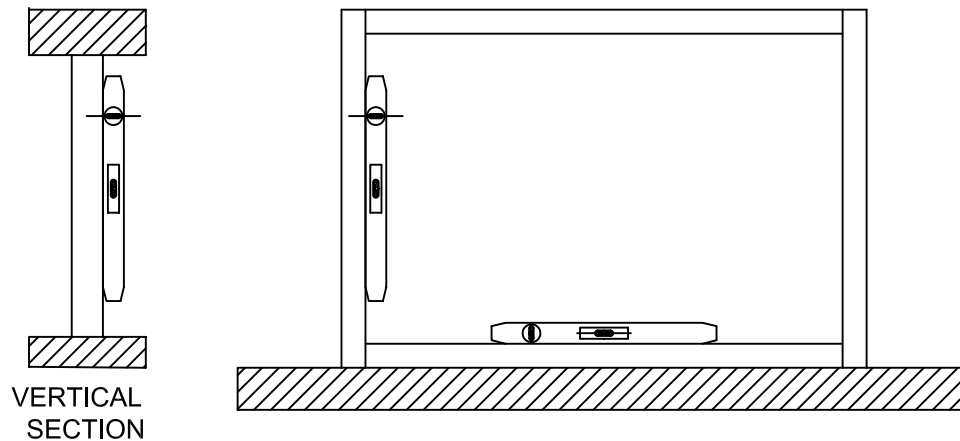




- 1.) The rough opening should be checked for the correct size as determined by tolerances listed in the architectural and the shop drawings.
- 2.) Establish the face of the window line at the head, sill and jambs. This reference is to be arrived at by using the architectural plans and shop drawings.
- 3.) Determine the high point of the masonry sill using a straight line or transit and shim as required. Shim as required.
(See below)



- 4.) For proper installation make sure vent is plumb and level.
(See below)

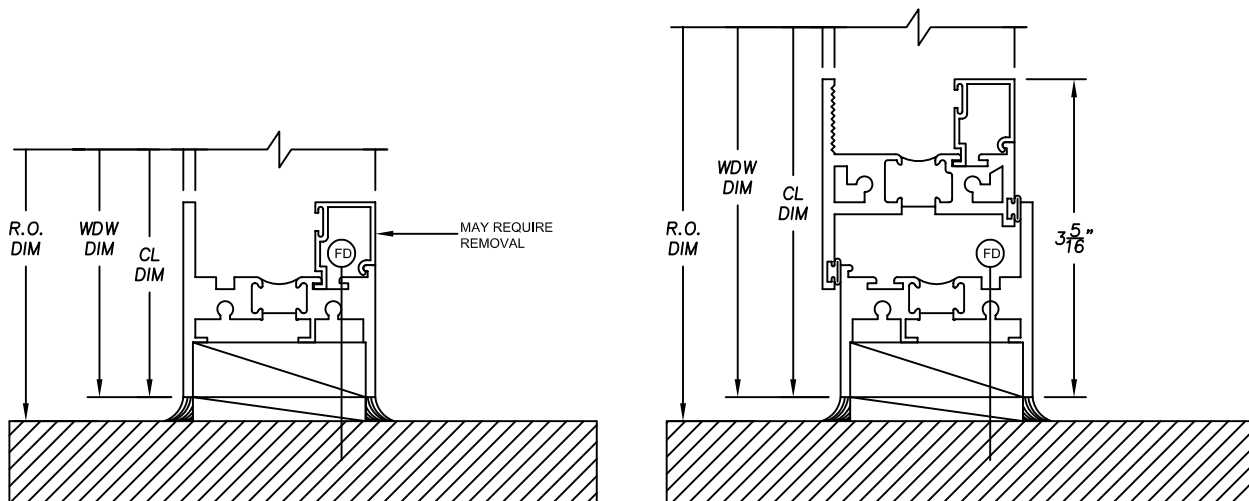


- 5.) Prior to installation, aided by the shopdrawings, determine the size, type and qty of perimeter fasteners required. WINCO will not be responsible for providing and/or specifying these anchors.

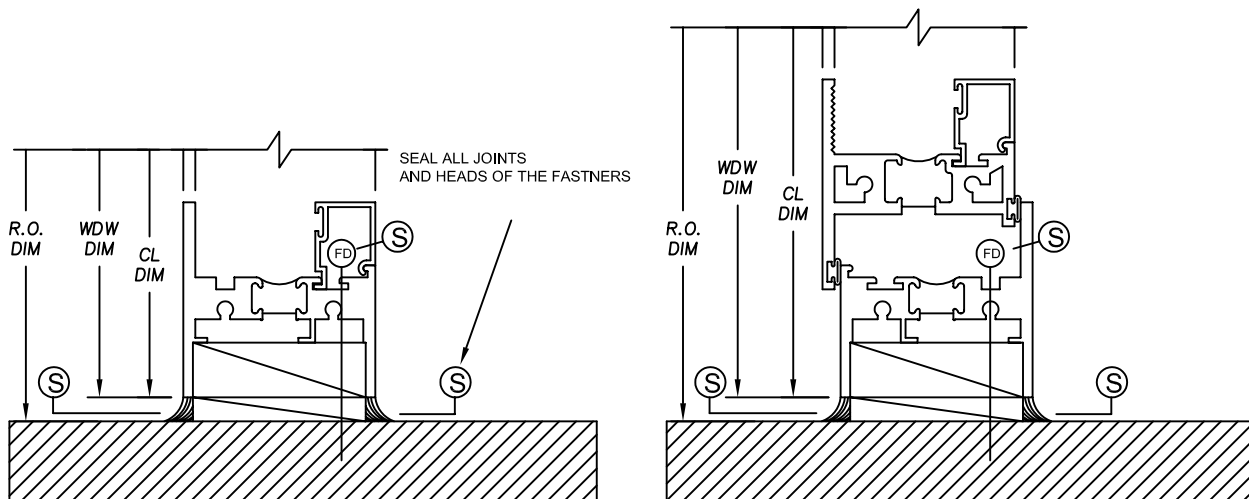
6.) See diagram below for typical sill anchorage.

Note: glazing bead removal and reinstallation may be required.

WINCO will not be responsible for any damage to glazing bead, glass breakage and any damage to the frame finish.



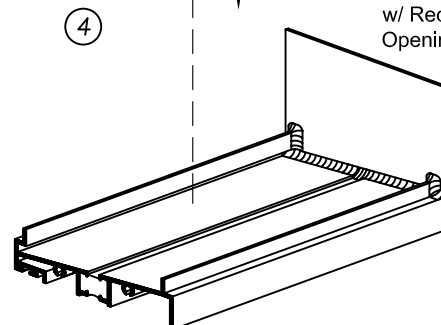
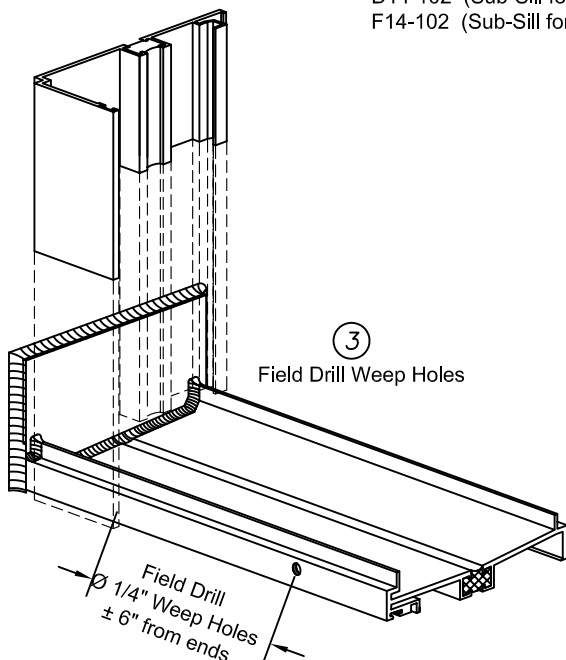
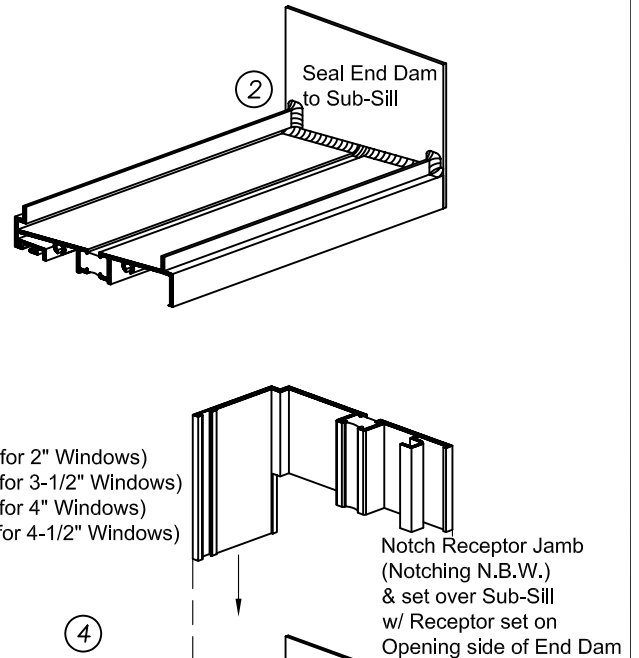
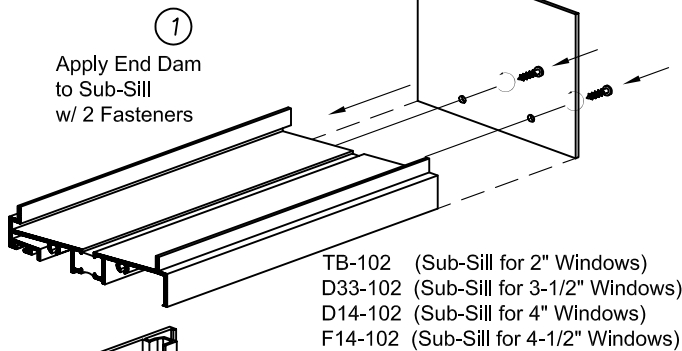
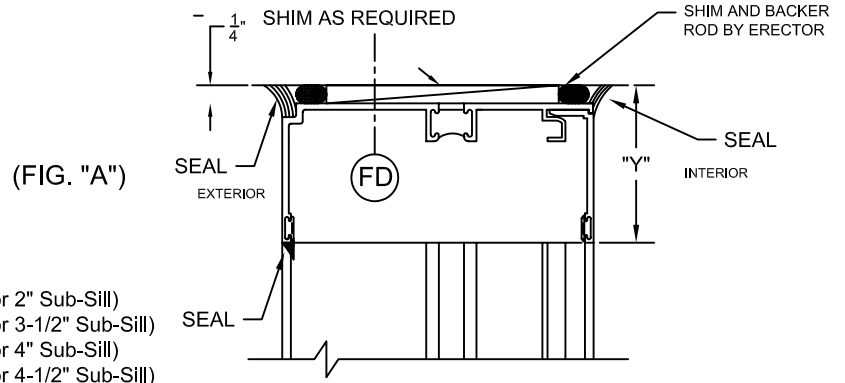
7.) Seal all areas noted below to maintain proper air and water protection as per test reports for WINCO windows.



General Installation of Sub-Frame System

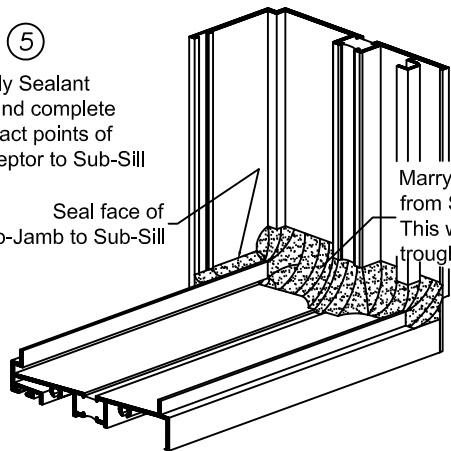
Note: All Sub-Frame material is shipped long for field cutting, fitting and drilling.

- 1.) Measure the opening for the horizontal and vertical opening dimensions. Square cut Sub-Sill to measured R.O. minus 3/8" (subtract any shim allowance from this dimension). Cut the Sub-Frame Head and Head Closure to the measured rough opening dimension minus any shim allowance. Trim weather stripping to the appropriate length. Do not stretch weather stripping.
- 2.) Subtract the Receptor Sightline ("Y") and any shim allowance from the R.O. height. Square cut Sub-Frame Jambs and Jamb Closures to calculated dimension. Notch the receptor jamb at the sill to fit sub-sill.



⑤

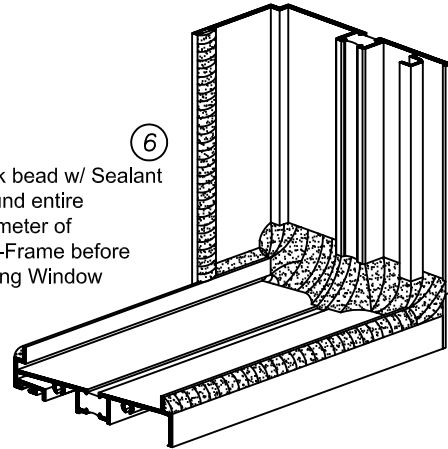
Apply Sealant around complete contact points of Receptor to Sub-Sill



Marry and tool Sealant from Sub-Jamb to Sub-Sill. This will create a waterproof trough.

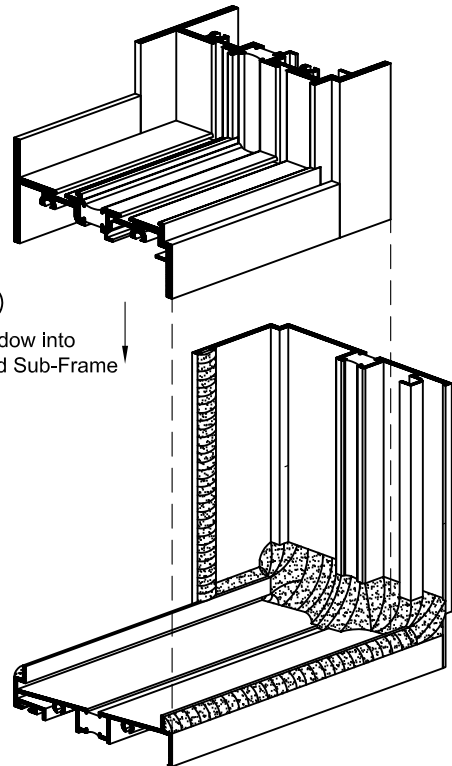
⑥

Back bead w/ Sealant around entire perimeter of Sub-Frame before setting Window



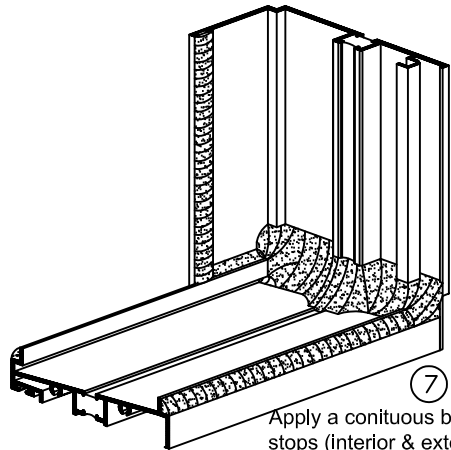
⑧

Set Window into prepared Sub-Frame system.



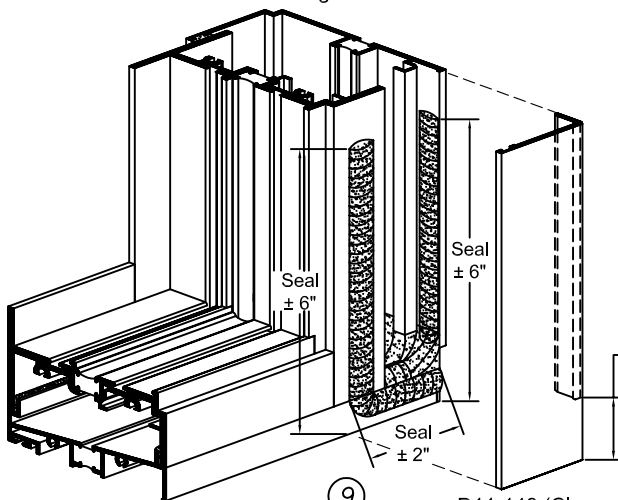
⑦

Apply a continuous bead of Sealant @ both stops (interior & exterior) of Sub-Sill before setting Window



⑨

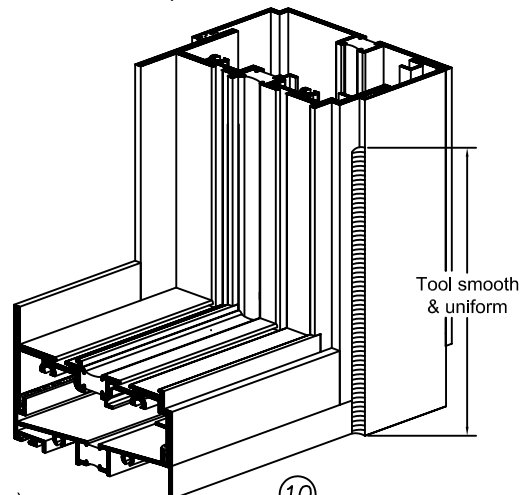
Apply continuous bead of Sealant 6" up at Jambes & at Sill where Jamb Closure meets Sub-Jamb, Sub-Sill and Window.



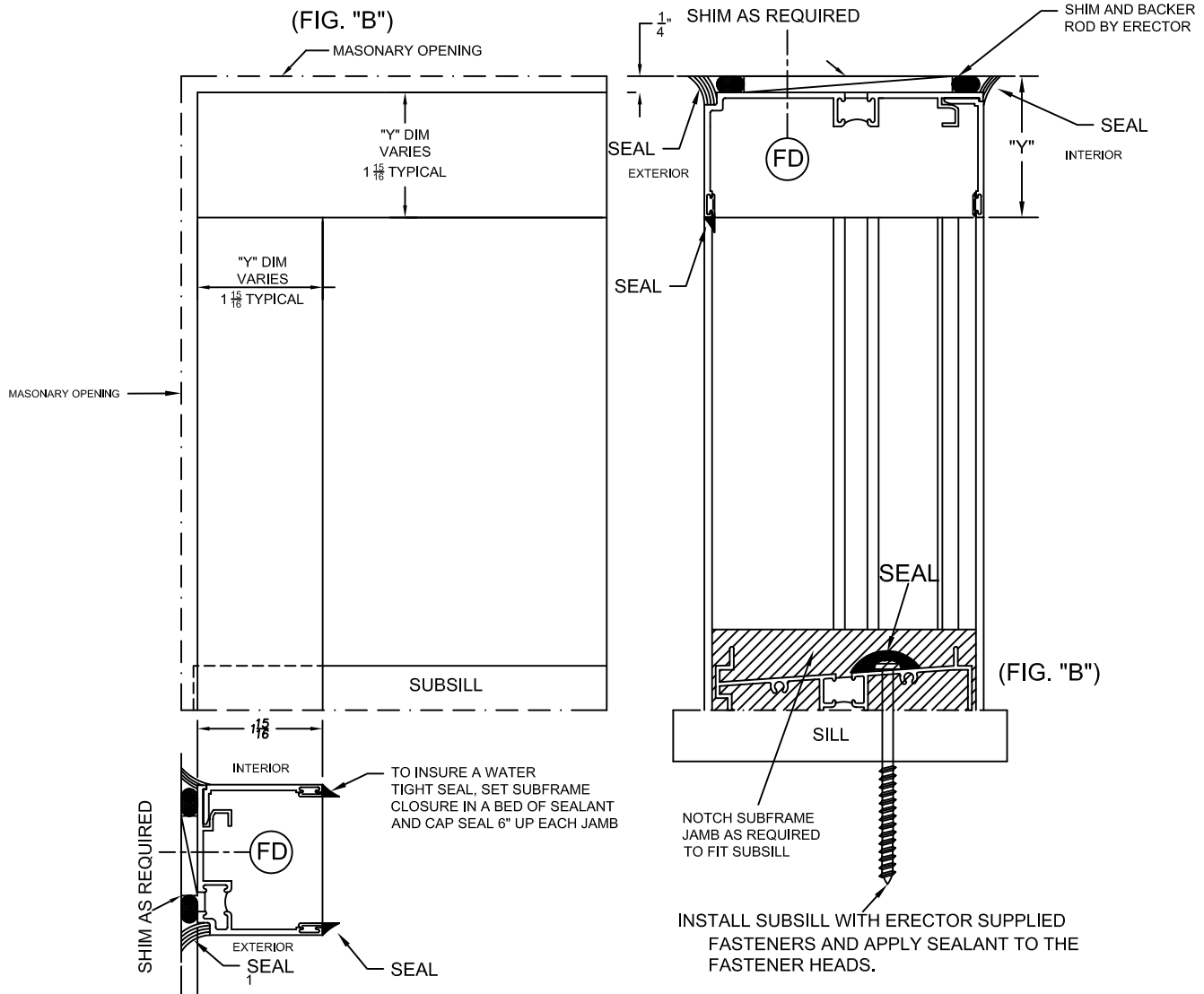
D11-148 (Closure for all Windows)

⑩

Apply Jamb Closure and tool squeezed out Sealant smooth & uniform.

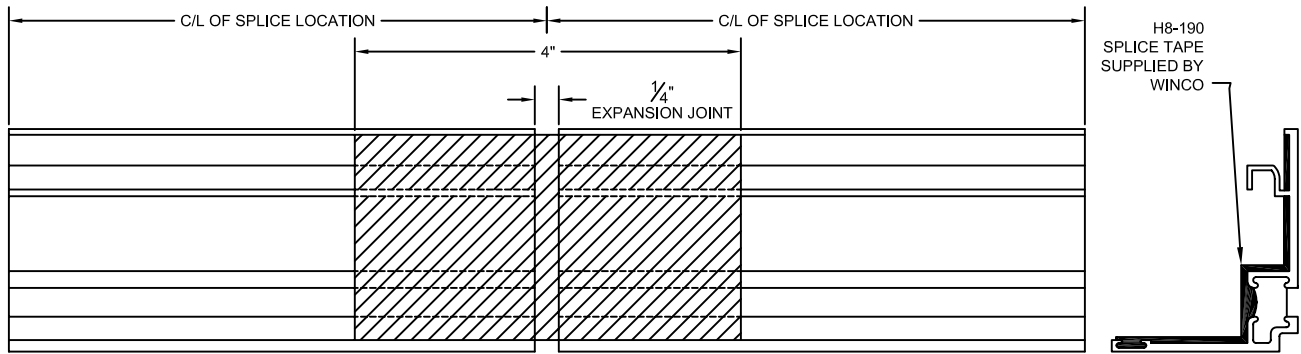


- 1.) Install Sub-Frame Jambs level & Plumb, and shim as required. Using the Sub-Frame Jambs as guide, install Sub-Frame Head level & plumb, shim as required. Apply sealant to all fastener heads. Field seal all butt joints, Seal the Sub-Frame to the building around the exterior perimeter as shown in figure "B" below. All sealant, shims and fasteners are furnished by erector.

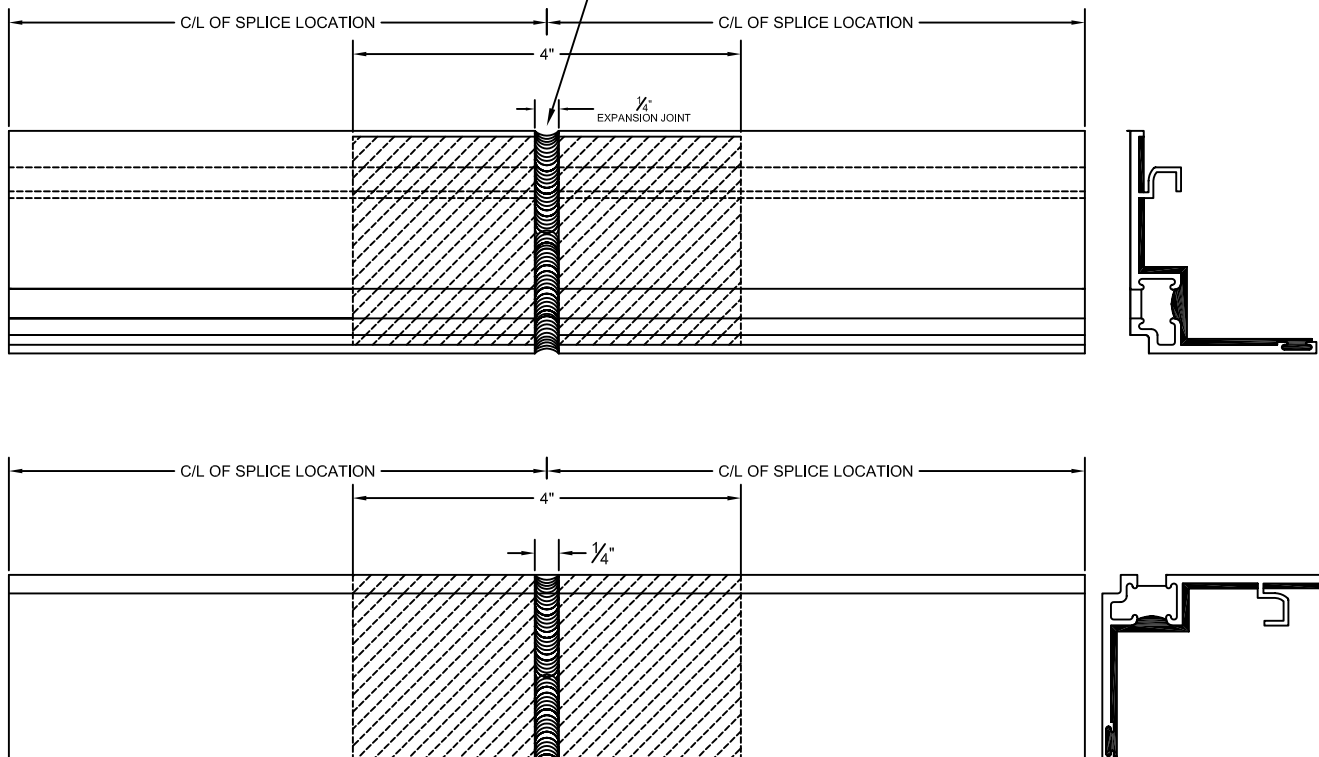


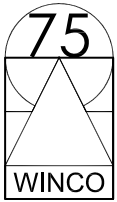
SPLICING SUBJAMBS AND SUBHEAD

- A.) MEASURE OPEING AND REFER TO SHP DRAWINGS TO DETERMINE SPLICE LOCATIONS
APPLY PERMA-BARRIER (H8-190) SPLICE TAPE AS SHOWN SUPPLIED BY WINCO



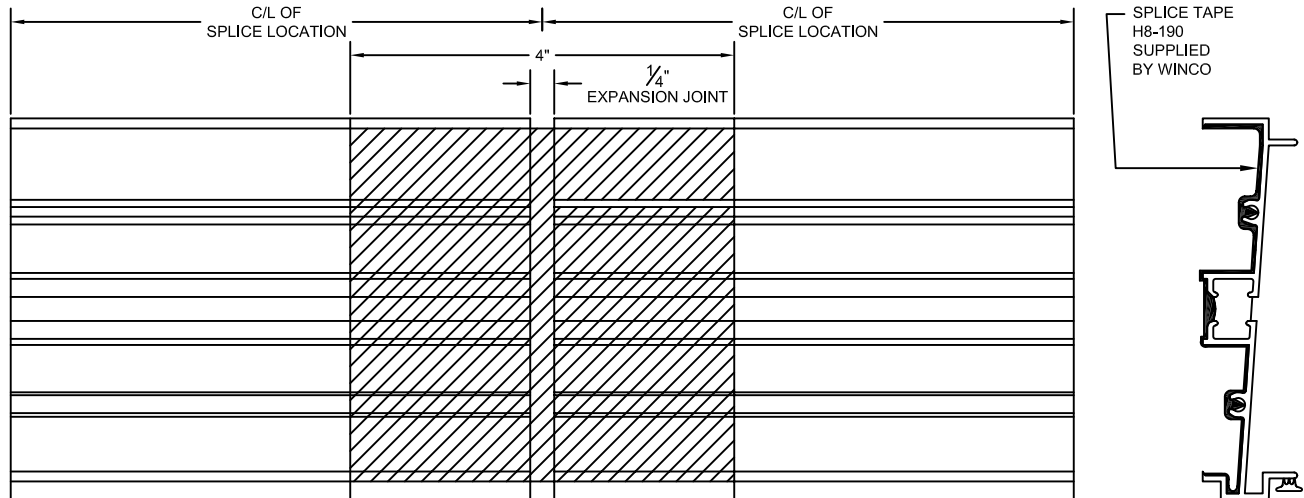
- B.) FIELD APPLY SEALANT OVER THE TAPE AT THE JOINTS
SEALANT NOT BY WINCO



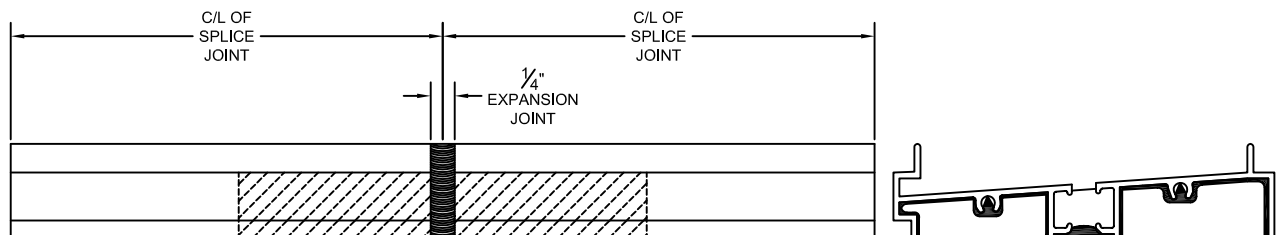
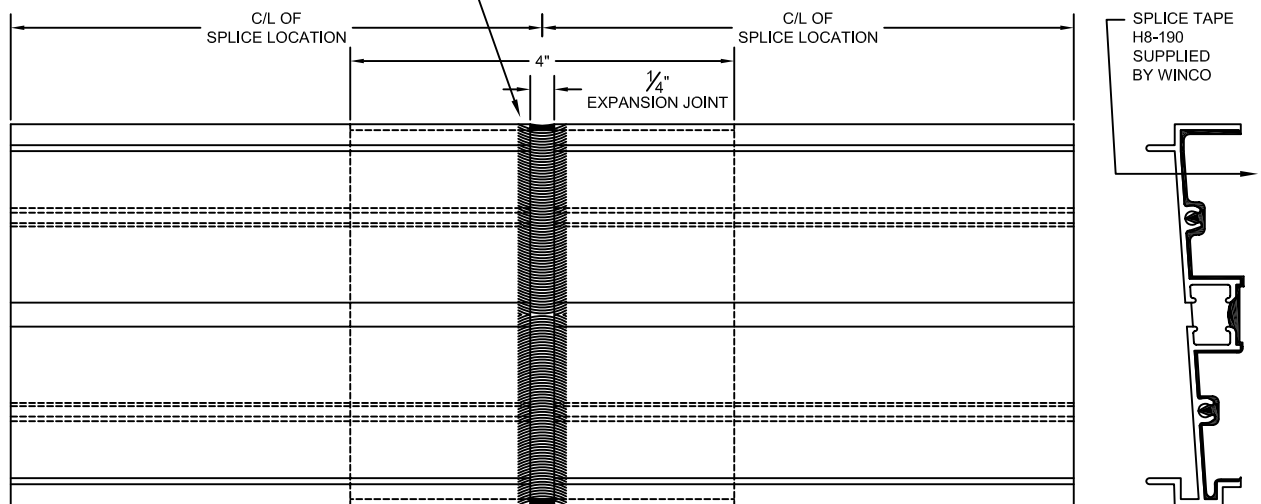


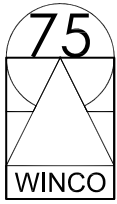
SPLICING SUBSILLS

- A.) MEASURE OPEING AND REFER TO SHP DRAWINGS TO DETERMINE SPLICE LOCATIONS
FIELD APPLY H8-190 SPLICE TAPE AS SHOWN SUPPLIED BY WINCO



- B.) FIELD APPLY SEALANT OVER THE TAPE AT THE JOINTS
OVERLAP THE SEALANT 1/8" ON TO THE METAL SURFACES
SEALANT NOT BY WINCO

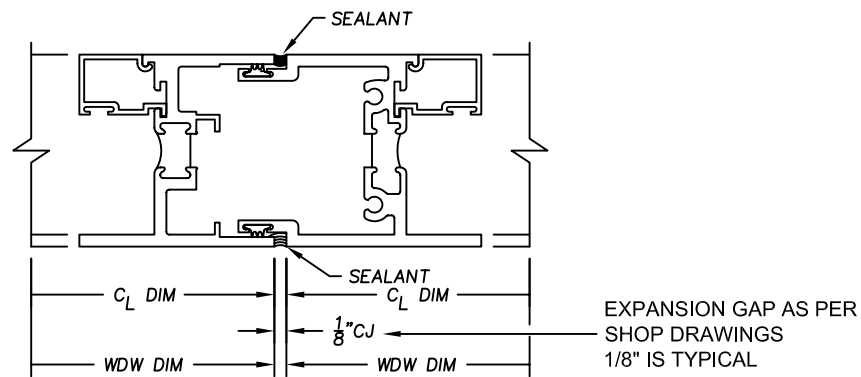




If windows are side stacked using male/female stacks, you have Two (2) options:

A:) Stack the window units together before inserting them into the opening.

B:) Place units in the opening all to one side. Then after installing the last units, adjust the windows in the other direction allowing proper stack joint clearance and perimeter joint requirements.



VERTICAL STACK

It is critical that both interior & exterior joints are sealed during installation.

Back bead both stacking legs with sealant before window installation or cap seal joints after windows are installed.

Installation of Mullions when using Sub-Frame

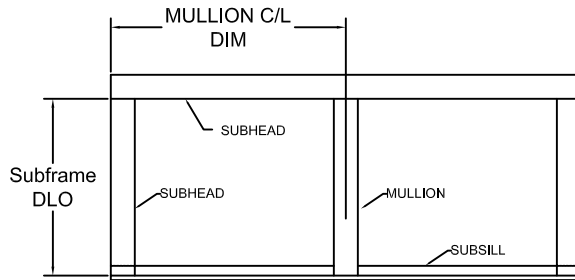


FIGURE "A"

①

Install Sub-Frame. Refer to the Sub-Frame Installation Section. Measure the daylight opening of the subframe. Cut the mullion to fit as illustrated in fig. "B". The stem of the mullion needs to be notched to allow the subsill to run continuous. Refer to the shop drawings for the correct centerline locations of the Mullion. (See fig. "A")

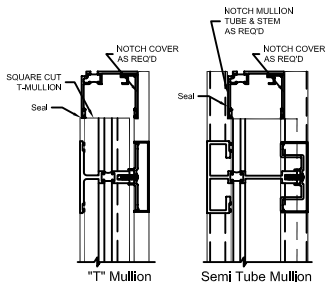
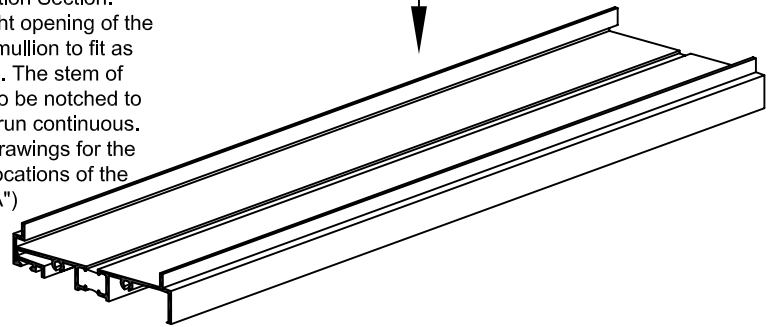
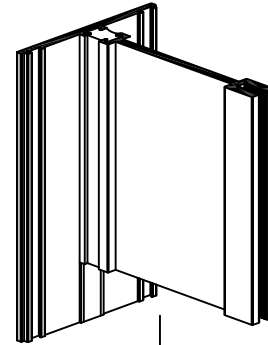
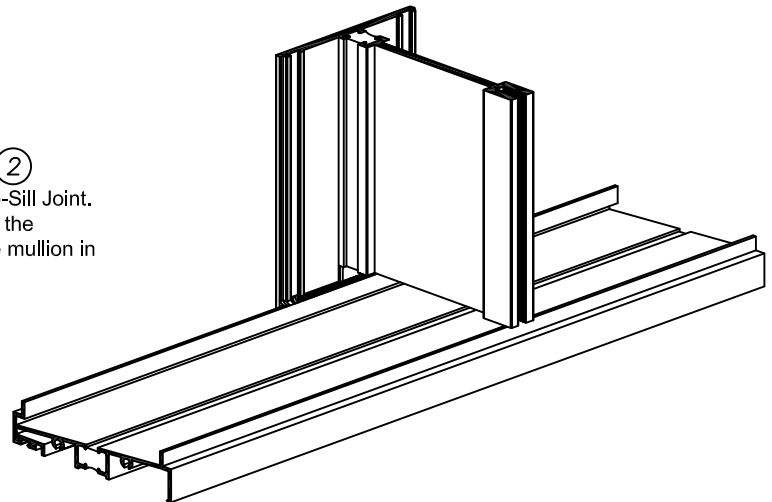


FIGURE "B"

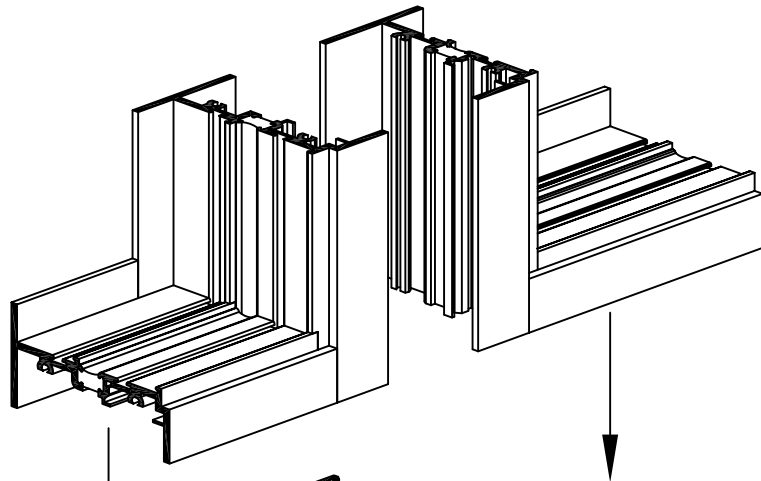
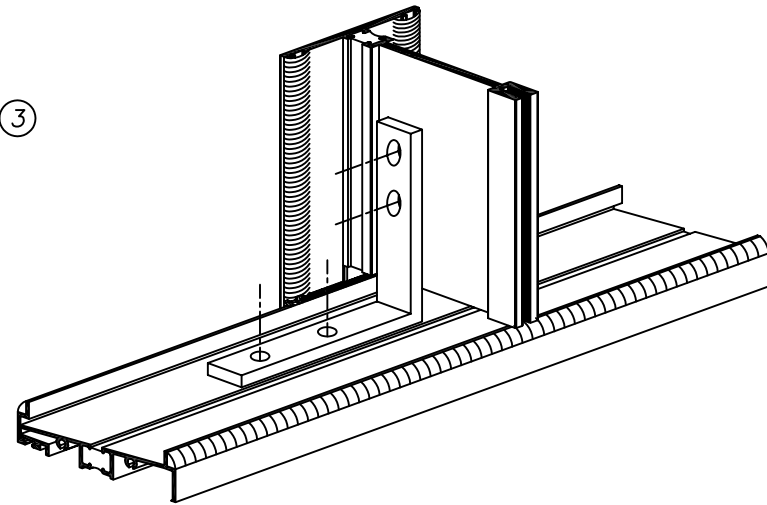
②

Seal Mullion to Sub-Sill Joint. Set the mullion into the opening. Plumb the mullion in the opening.

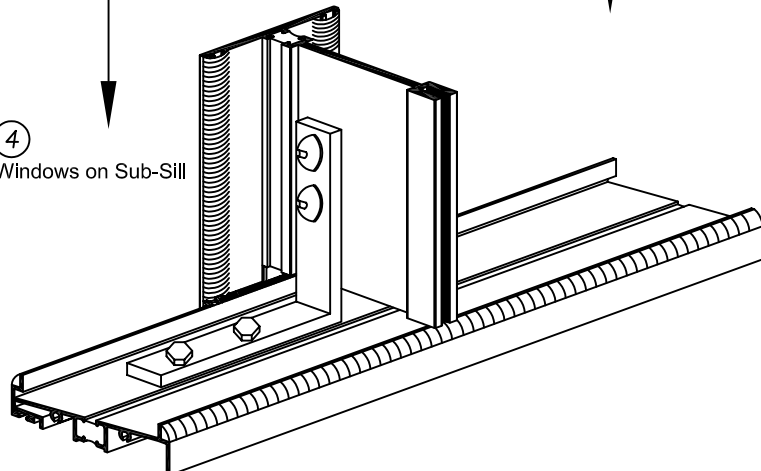


Fasten the mullion to the condition with anchor clips supplied by WINCO. Locate 1 L4x4x1/4 at the head and the sill of each Mullion. Attach the angles to the masonry with fasteners furnished by the erector. Then attach the angle to the mullion with the nuts & bolts furnished by WINCO. Each mullion anchor requires 2 fasteners to the masonry. Type & size is to be determined based on the architectural drawings by the erector or a qualified engineer.

Back Bead Mullion and Sub-Frame w/ Sealant around entire perimeter before setting windows.

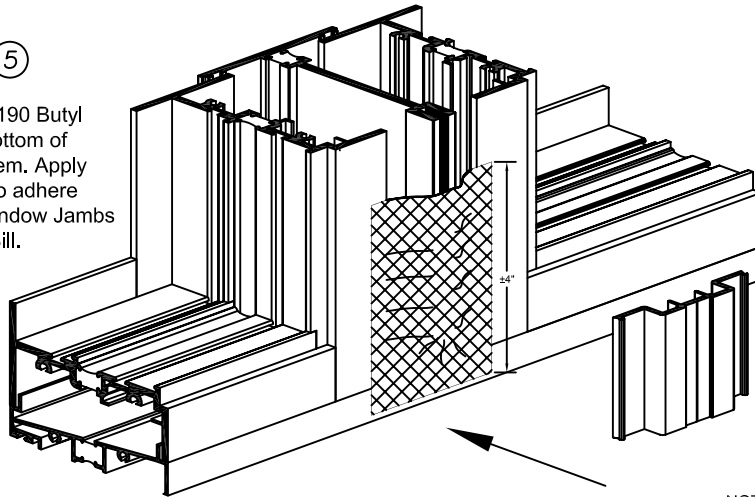


④
Position Windows on Sub-Sill

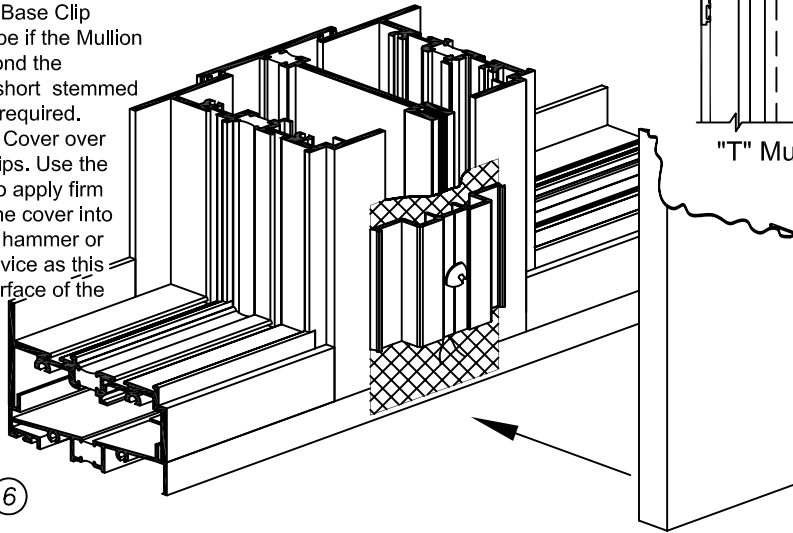


⑤

Apply H8-190 Butyl Tape to bottom of Mullion Stem. Apply pressure to adhere tape to Window Jambs and Sub-Sill.

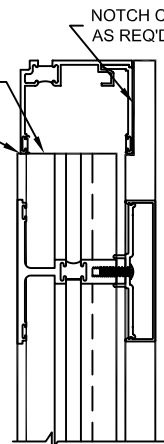


Attach Mullion clips with screws supplied by WINCO $\pm 16"$ O.C., no more than 8" from each end. Ensure that Mullion Base Clip covers the Butyl Tape if the Mullion Stem protrudes beyond the Window Jamb. On short stemmed Mullions, this is not required. Position the Mullion Cover over the Mullion Base Clips. Use the palm of your hand to apply firm pressure and lock the cover into place. Do not use a hammer or any other impact device as this may damage the surface of the cover.



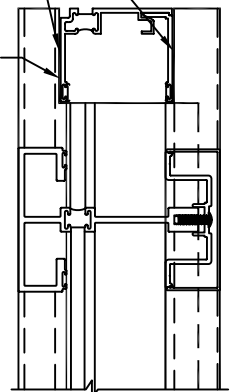
⑥

SQUARE CUT T-MULLION
Seal
NOTCH COVER AS REQ'D



"T" Mullion

NOTCH MULLION TUBE & STEM AS REQ'D
NOTCH COVER AS REQ'D
Seal



Semi Tube Mullion

FIGURE "B"

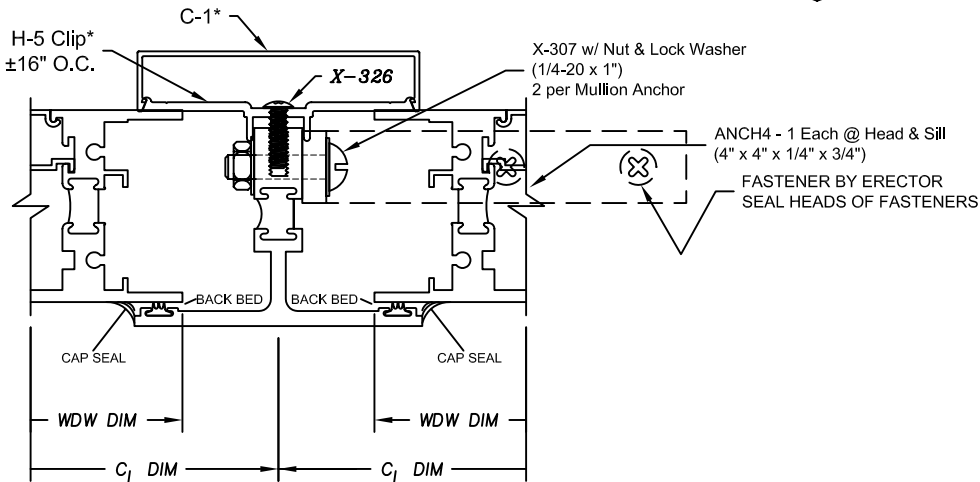
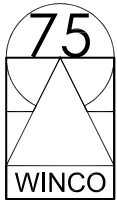


FIGURE "C"



Installation of Mullions when not using Sub-Frame or Panning

A.) Refer to the shop drawings for the correct centerline locations of the Mullion.

B.) For locations not using Sub-Frame or Panning, Mullions are supplied square cut to the rough opening height plus 2" to allow for field trimming.

C.) Set the mullion into the opening. Plumb the mullion in the opening. Fasten the mullion to the condition with anchor clips supplied by WINCO. Locate One (1) L4x4x1/4 at the head and the sill of each Mullion. Attach the angles to the masonry with fasteners furnished by the erector. Then attach the angle to the mullion with the nuts & bolts furnished by WINCO.

Each mullion anchor requires Two (2) fasteners to the masonry. Type & size is to be determined based on the architectural drawings by the erector or a qualified engineer.

D.) Back bead the Window to Mullion contact area with sealant. Before installing the Window. Then cap seal after the Window is installed.

See figure "C".

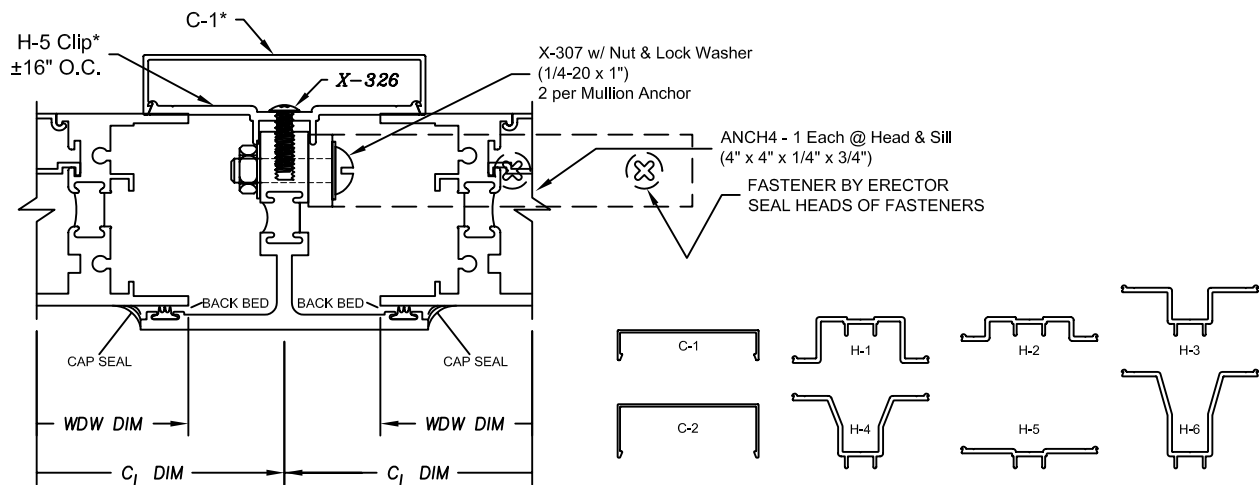
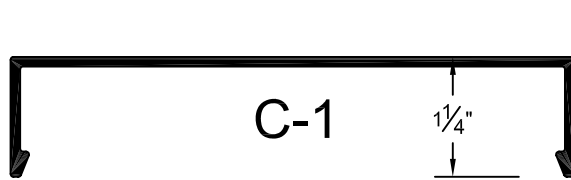
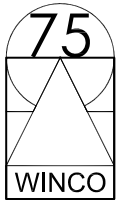


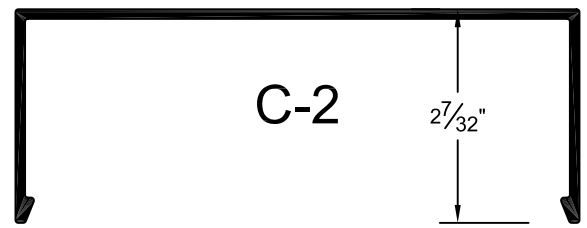
FIGURE "C"

* Cover and clip requirements depend on window system depth and mullion used. They will be specified & furnished by WINCO as req'd.



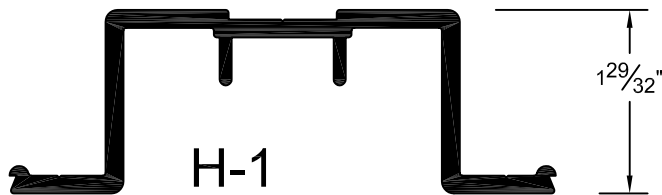
C-1

1 1/4"



C-2

2 7/32"



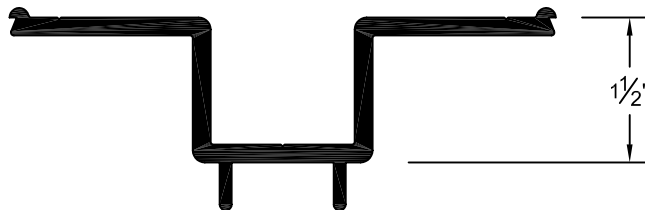
H-1

1 29/32"



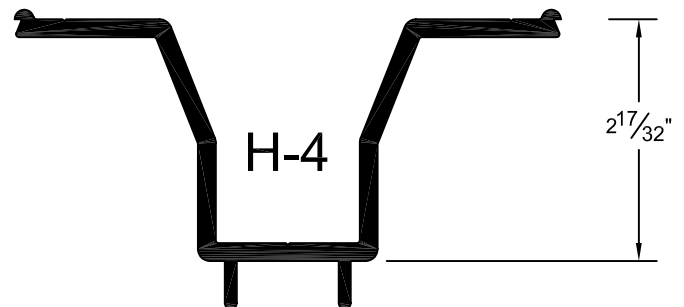
H-2

1"



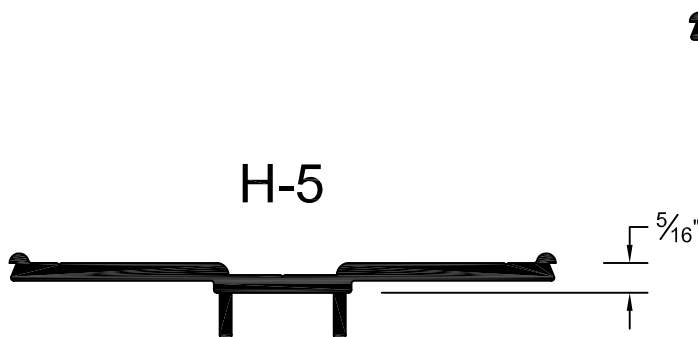
H-3

1 1/2"



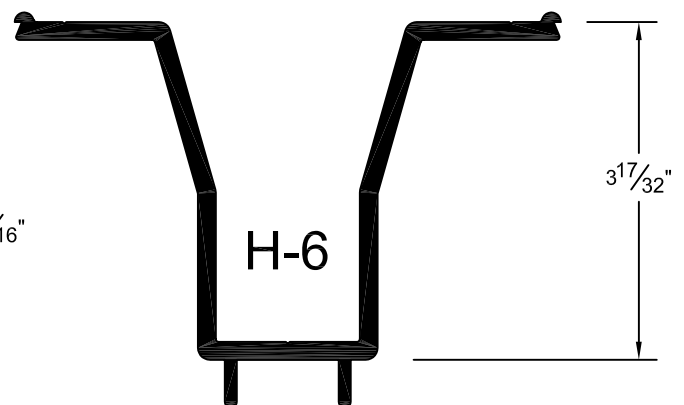
H-4

2 17/32"



H-5

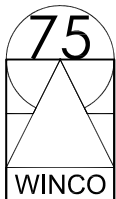
5/16"



H-6

3 17/32"

* Cover and clip requirements depend on window system depth and mullion used. They will be specified & furnished by WINCO as req'd.

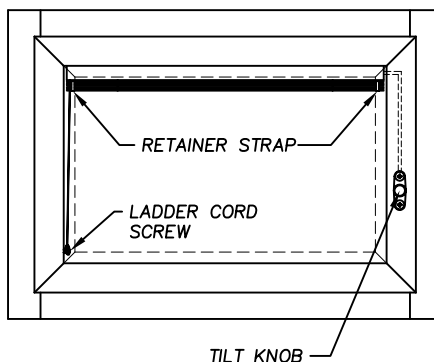


BLIND DROP PROCEDURE:

It is critical that the blinds are not lowered until the window is fully anchored and all mechanical work (drilling, bolting, sealing etc.) is completed.

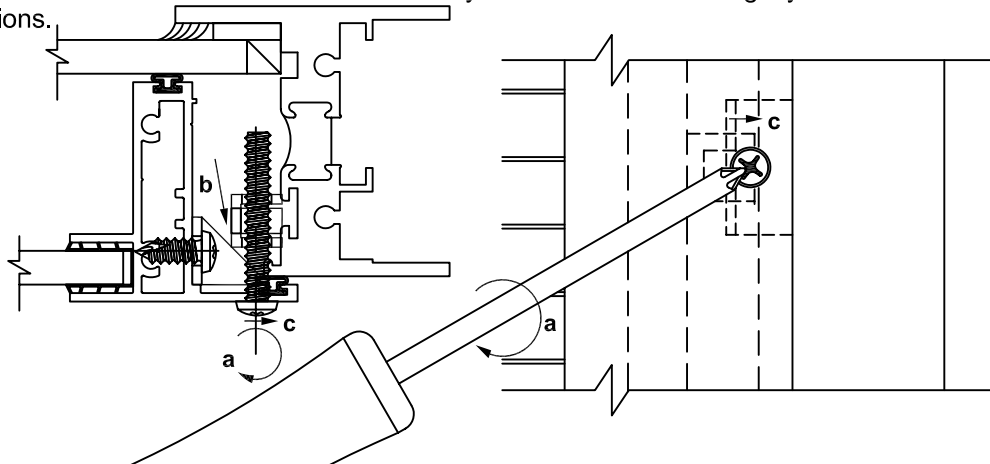


Bottom Blind Rail



* Lift cords for all between glass ventian blinds must remain inside the sealed window unit.
Lift cords should be accessible only to properly trained and authorized personnel.

- 1) Open or remove interior panel (access sash).
- 2) Cut and dispose blind retainer straps. Apply the cutting tool at the bottom blind rail.
Care must be taken not to damage the ladder cord or blind slats.
Avoid direct pressure on the blind slats as this may permanently bend the slats.
- 3) Remove and dispose screw holding the blind ladder cord.
- 4) Carefully lower the blinds with the ladder cord.
- 5) Visually inspect the blind slats. If necessary adjust any slats that may have been slightly bent due to lowering the blind and or removing or opening the blind sash.
- 6) Replace / close blind access sash.
- 7) Open and close the blinds a couple of times by turning the tilt knob. This will position the blind slats in the ladder cord correctly and will eliminate unsightly slat positions.



Hand tighten the H202-H203 ramp clamp assy. with a #2 Philips screwdriver (a).

As the internal clamp closes (b), the screw head will move slightly outward (c).

Avoid excessive pressure on the tool to avoid unsightly scoring from the screw head.

Depending on the sash size & configuration, the closing hardware is located at the sash head and/or at the sash jamb.

- DO NOT OVER TIGHTEN! -

Avoid Powertools: excessive torque may permanently deform the sash extrusion and/or strip the screw head.



WINCO Installation Instructions - Page 19
1-800-525-8089