



Series 3410

4" Architectural Grade Window System
Fixed - Sliding



Product Overview

The 3410 Series has a 1/16" nominal wall thickness in the mainframe and sash. An 0.080" nominal stainless steel cover is available for the raised roller track and is up to the task that your project demands. It has been successfully used in many applications such as schools, hospitals, and condominiums in both public or private projects.

As with most Winco Windows between the glass Venetian blinds can be added for total vision control. Also available is a full line of trim and accessories that can take a standard window and turn it into a custom design solution.

GREEN COMMITMENT

HISTORIC REPLICATION

NOISE CONTROL

WIND PROTECTION

Features & Custom Options

- Azon "Azo-Brader" thermally broken frame and sash, backed by a 10 year warranty against thermal break shrinkage
- Various glazing thicknesses available
- Accessory line of receptors, mullions, panning and trim for a customized look
- Dual glazing with optional integral blinds providing dynamic light control
- Blast, ballistic and impact glazing available
- Optional aluminum extruded screens
- Accompanying fixed frame options

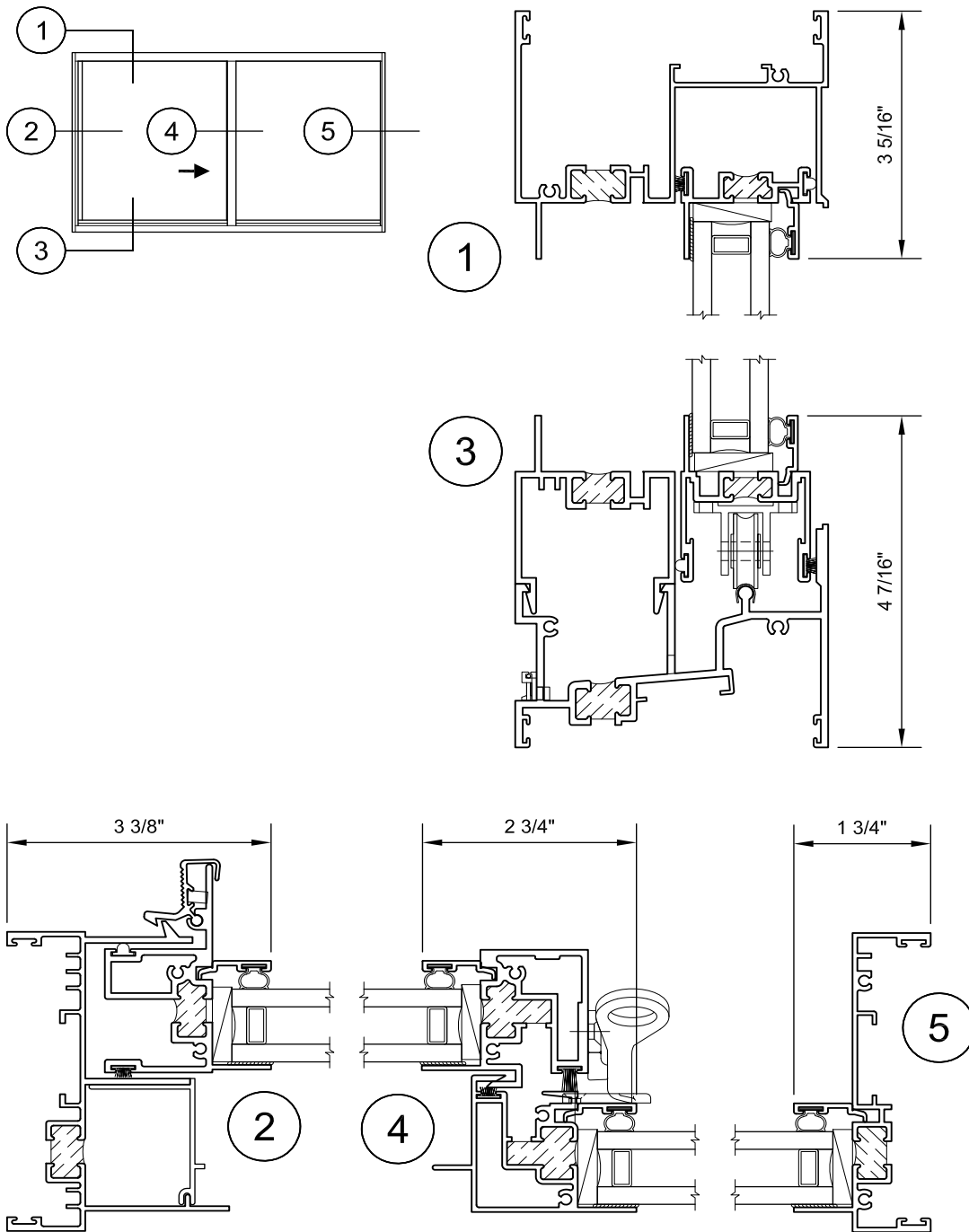
Performance Data*

Type	Air (CFM/FT2 @ 6.24 PSF)	Water (PSF)	Structural (PSF)	CRF	U-Value (Btu/Hr-Ft ² -°F)	STC
Sliding AW Grade S-AW50	Less than 10	12 (Higher levels may be available upon request)	+/- 75	57*	0.34*	Contact your local Rep

*U-Value, CRF, Water and AW ratings are based on a particular type of glazing and window configuration being used. They are provided for comparison purposes only. They are based on products of standard configuration, tested in accordance with NFRC/FGIA/AAMA specifications, in a laboratory environment under optimum conditions. Performance values will vary according to project specifications, installation, size, configuration, hardware, glass, etc. Any required field testing should be done in accordance with the project specifications and FGIA/AAMA field testing protocol, not this data.



Series 3410 Detail Drawings



Winco Window Company
6200 Maple Avenue
St Louis, MO 63130

TESTING: Our products meet stringent testing requirements of both the American Architectural Manufacturers Association (AAMA) and the National Fenestration Rating Council (NFRC) standards and certification.

VER:131021

