



UConn Downtown Hartford Campus

Hartford, Connecticut



Winco Helps Revitalize the Historic Hartford Times Building

When the University of Connecticut relocated its campus to downtown Hartford this summer, the university returned to its roots. Originally established in downtown Hartford in 1939, UConn moved to its West Hartford campus in the seventies. Now, the school has chosen a key destination for its downtown homecoming - the historic Hartford Times Building. Not only was the Hartford Times the premiere newspaper in the region through 1976, it played an important role in U.S. history. Four presidents made presidential campaign addresses at the notable building: Harry S. Truman (1948), Dwight D. Eisenhower (1952), John F. Kennedy (1960), and Lyndon B. Johnson (1964).

PROJECT DETAILS

Systems Provided

Series: 3250 Steel Replica

Product Type: Historic Replica

Market: Education - University

Project Team

Architect

Robert A. M. Stern Architects

Glazing Contractor

Massey's Plate Glass & Aluminum, Inc.

General Contractor

The Whiting-Turner Contracting Company

Historic Preservation Consultants

Wiss, Janney, Elstner Associates, Inc.



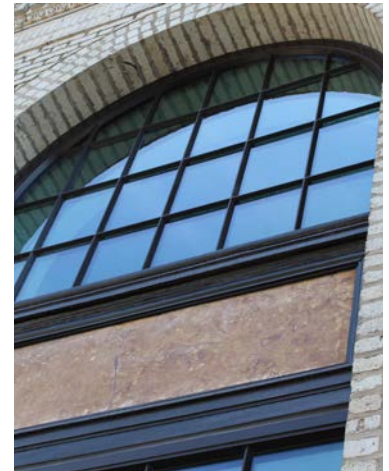


To bring the Hartford Times building's 1920's architecture up to date with state of the art technology, historic preservation consultants at Wiss, Janney, Elstner Associates, Inc. and Robert A.M. Stern Architects LLP called on Winco's northeastern reps, True Enterprises during the budget and design stages of the project.

Along with selecting Steel Replica Windows that complement the building's Beaux-Arts aesthetic, Winco also installed windows for the school's new 23 classrooms, five teaching labs, three computer labs, collaboration spaces and meeting rooms.

Winco's 3-1/4" architectural grade thermal windows (Series 3250) are designed for historic replication projects, just like the one at UConn," says Bill True, president of True Enterprises. "The windows offer wind protection, energy savings, and most importantly for a college campus, noise control." The 3250 Series frames and vents come fully factory glazed to reduce field labor and cut costs.

"The Hartford Times building is one of the city's most iconic landmarks," says True. "We're proud to equip the building with advanced window technology that creates a safe and secure learning environment for UConn's future leaders."



Project Awards

2018 CNU Charter Award

2018 Connecticut Preservation Award

BSA Design Award

CTGBC Award

2019 SCUP/AIA-CAE Excellence Award

UConn Downtown Certified LEED Gold

