



Winco Psychiatric Windows

help secure day-lit healing environments for hospital's mental health patients

AAMA rated for AW-80 air, water and structural performance

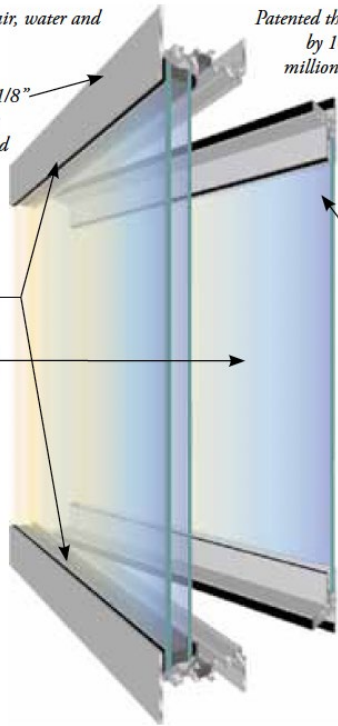
3-1/2" frame depth with 1/8" wall thickness for superior structural performance and durability

Fully mitered frame and sealed corners

Dual weather-stripping

Optional 5/8", 1", or 2" integral blinds and flush knob

Optional hurricane-resistant impact glazing



Patented thermal-break process backed by 10-year pass-through, multi-million-dollar warranty protection against dry shrinkage

Concealed hinges and redundant locking mechanisms

Impact and mar-resistant polycarbonate or laminated glass

Dual or triple glazing

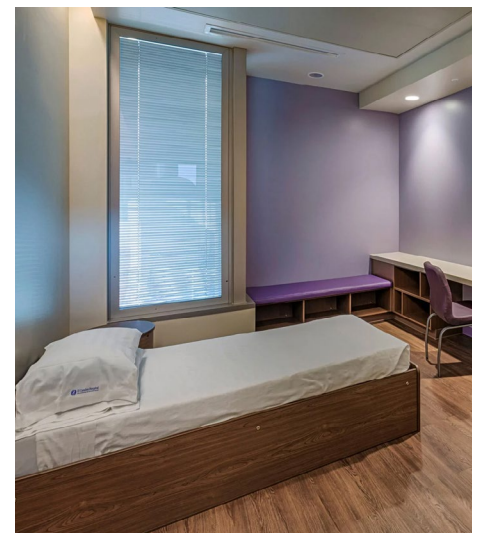
Tested to AAMA 501.8 (2,000 ft.-lbs).

Available with Retrofit Solution Insert

Flush hardware and sash

Our psychiatric windows resist or minimize:

- Attacks from patients wielding blunt or sharp objects
- Attacks from intruders
- Exposure to flame and heat
- Exposure to chemicals and bodily fluids
- Abrasion of glazing (polycarbonate protective)
- Prying or cutting of frame materials



Designed for Uncommon Strength and Patient Safety

Winco recognizes natural light promotes a healing environment for hospitals and mental health institutions. Our psychiatric windows are engineered to be robust and secure behind a non institutional framing system with protective glazing that delivers natural daylight with the security and protection required for psychiatric care facilities.

Contact us for more information!

