



A Welcoming Look for Healthcare Institutions

Designed for Uncommon Strength and Patient Safety

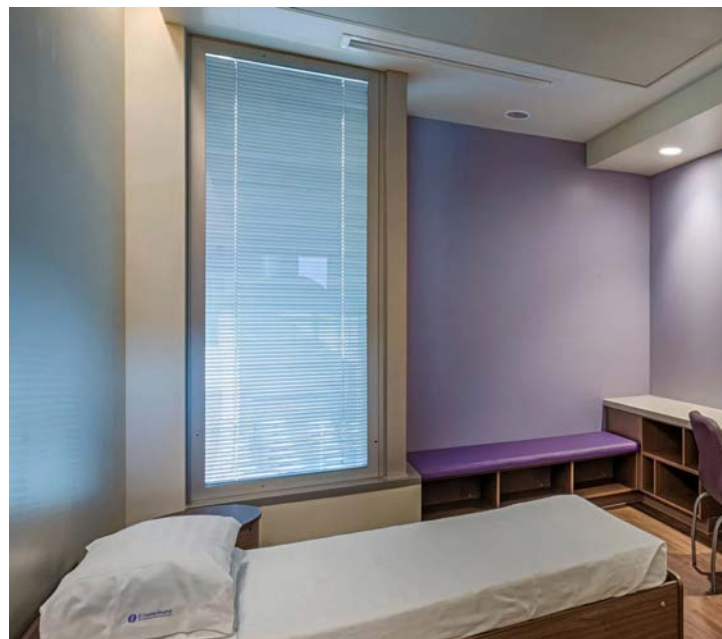
Our Psychiatric Windows let the sunshine in. They can also provide a quiet, comforting environment using our integrated blinds option. Yes, they may look like ordinary windows, but they're built tough to protect patients and property.

Within a non-institutionalized looking framing system, our Psychiatric Windows feature aesthetic hallmarks of traditional windows:

- Dual or triple glazing
- Impact and mar-resistant polycarbonate or laminated glass
- Dual weather-stripping
- Concealed hinges redundant locking mechanism
- Flush hardware and sash



Swinging Test Weight of a 300-lb. weight, simulating the impact of a 250-lb. man 100



But what lies underneath these frames is uncommon strength constructed for performance, durability and security. Winco Psychiatric Windows can withstand a number of potential dangers: attacks from blunt or sharp objects, intruders, and exposure to chemicals or bodily fluids. They meet or exceed a battery of tests, including:

- AAMA-rated for AW-80 air, water and structural performance
- AAMA 501.8 (2,000 ft. . lbs.)
- Swinging Test Weight of a 300-lb. weight, simulating the impact of a 250-lb. man 100