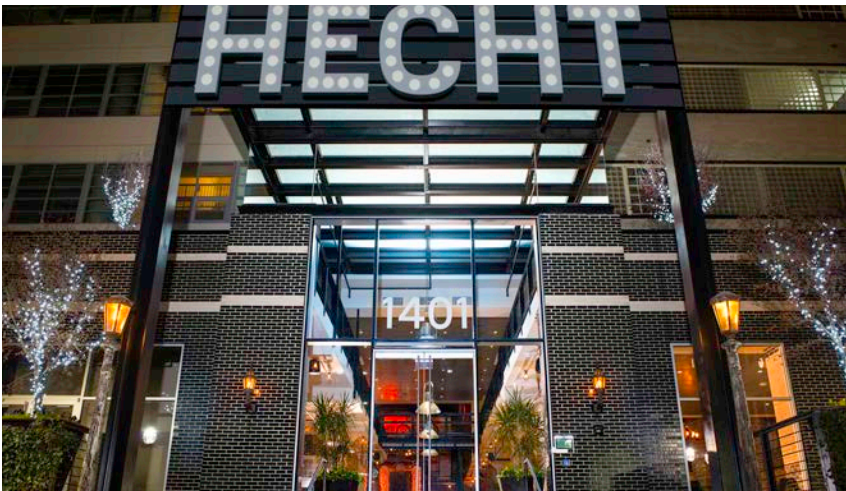




Hecht Warehouse

Washington, D.C



Updated Hecht Warehouse Development Hard to Miss

With its sleek lines, extensive use of glass blocks and illuminated, 12-point, star-shaped cupola atop its corner tower at New York Avenue and Fenwick Street, Hecht Warehouse has been an iconoclastic D.C. landmark since 1937.

Douglas Development purchased the historic Hecht Warehouse in 2013 for redevelopment into retail space and apartments. Restoration work was completed by Antunovich Associates, an architecture, planning and interior design firm in Chicago and Washington, D.C., and Winco Window Company.

PROJECT DETAILS

Systems Provided

Series:

1150S

3250 Steel Replica

Market:

Multi Family/Residential

Project Team

Owner

Douglas Development

Architect

Antunovich Associates, Inc.





For our part, Winco replaced all of the windows. The 1150S Series Projected / Casement Windows were painted black for use in the tower and courtyard, and the 3250 Series Historic Steel Replica Windows were painted lemon cream to match the brick and glass block façade of the rest of the six-story building.

The extensive rehab kept authentic warehouse details inside the lofts, including concrete flooring, 12-foot high ceilings and exposed brick. Items such as old water tanks, elevator gears and emergency phones found during the demolition phase were repurposed for use in the lobby and other amenity spaces.

If you have an historic building like the Hecht Warehouse in need of window replacements, call a Winco rep to help you get the look and feel of old with the strength and performance of new.

