



Winco's Hurricane-Rated Steel Replica Windows

Winco Window Company has introduced its hurricane-rated version of its popular 3250 Steel Replica Windows, capable of withstanding up to 200-mph hurricane winds. This unique new product is ideal for historic projects that need to reflect the architectural integrity of traditional buildings while meeting today's strict requirements for hurricane zones - anywhere in the coastal United States.

Top Notch Certifications

This new series of Steel Replica windows are hurricane-impact tested to meet:

- AAMA (American Architectural Manufacturers Association)
- Certification
- Missile E (9# 2x4 @ 80fps)
- Missile D (9# 2x4 @ 50fps)
- ASTM E1886/E1996 enhanced protection of wind zone 4 requirements
- Blast-tested per ASTM F1642 to meet UFC requirements

The Winco 3250 Steel Replica Window Florida Product Approval number is: FL22628.1





Winco's Steel Replica windows are manufactured with heavy aluminum frames, making them a competitive alternative to real steel windows at a 30-40 percent cost reduction. Steel Replica windows are factory glazed and come with manufacturer's warranty. The laminated interlayer buffers noise, wind and water infiltration while offering an energy-saving 0.33 BTU/F-Hr-Ft² U-Value. Winco offers unequal leg perimeter frames or taller profile frames for use as Steel Hung Replica windows.

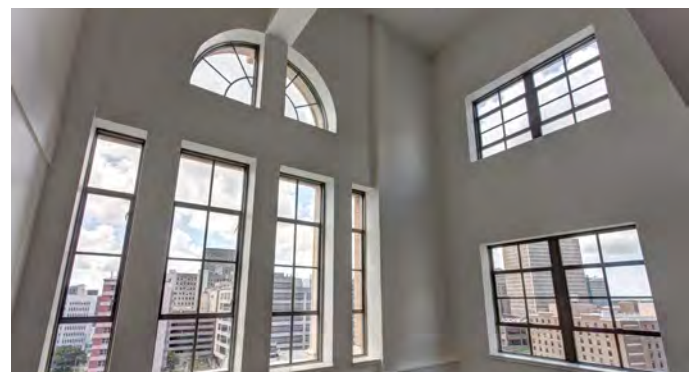
Where to Use the 3250 Series

Key features that make Winco 3250 Series Steel Replica windows ideal for such historic structures as old factories, schools and universities, government and military buildings include project out vents, 2-3/4" wide stack joints that meet historic sightline requirements, and side stack or three-piece mullions for bay windows.

Historical Attributes Give Projects an Edge

Winco's 3250 Series Steel Replica windows offer many attributes required by preservation societies. Winco offers the thinnest profiles on the market with an architectural grade thermal window system that features 3-1/4" deep frame with 1/8" wall thickness, permitting large window sizes without the need for reinforcements.

Historic options include grid profiles to accommodate a variety of designs, applied grids instead of true divided lights to achieve lower U-Values, and Simulated Divided Lights (SDL) for a true historical divided appearance. Winco offers faux sashes for budget conscious projects and revised sashes for the use of standard cam locks and casement lift locks. Accessories such as sub-frames, mullions, panning, and receptors or snap trim can help customize every project.



Contact Us for a Free Project Consultation!

VER:200722