

# The Pythian

New Orleans, LA

## PROJECT DETAILS

### Systems Provided

**Series**

3250 Steel Replica

**Market**

Multi-Family/Residential

### Project Team

**Architect**

Studio WTA

**General Contractor**

Landis Construction Company

**Glazing Contractor**

DeGeorge Glass Company, Inc.,

## The Pythian Apartments celebrate New Orleans' past while being a part of its promising future

### A Louisiana Legend

New Orleans' historic legend, self-made millionaire, Smith Wendell Green, built the Pythian Temple in 1909. He created a home for the Grand Lodge Colored Knights of Pythias, a postwar fraternal order. Smith W. Green designed an elegant building that included an opera house, a theater, and a cultural center. The Pythian is reputed to be the first place where 12-year-old Louis Armstrong performed in public. The building was long celebrated as a center of African American commercial and social life in the early 20th century.





## History Comes Full Circle

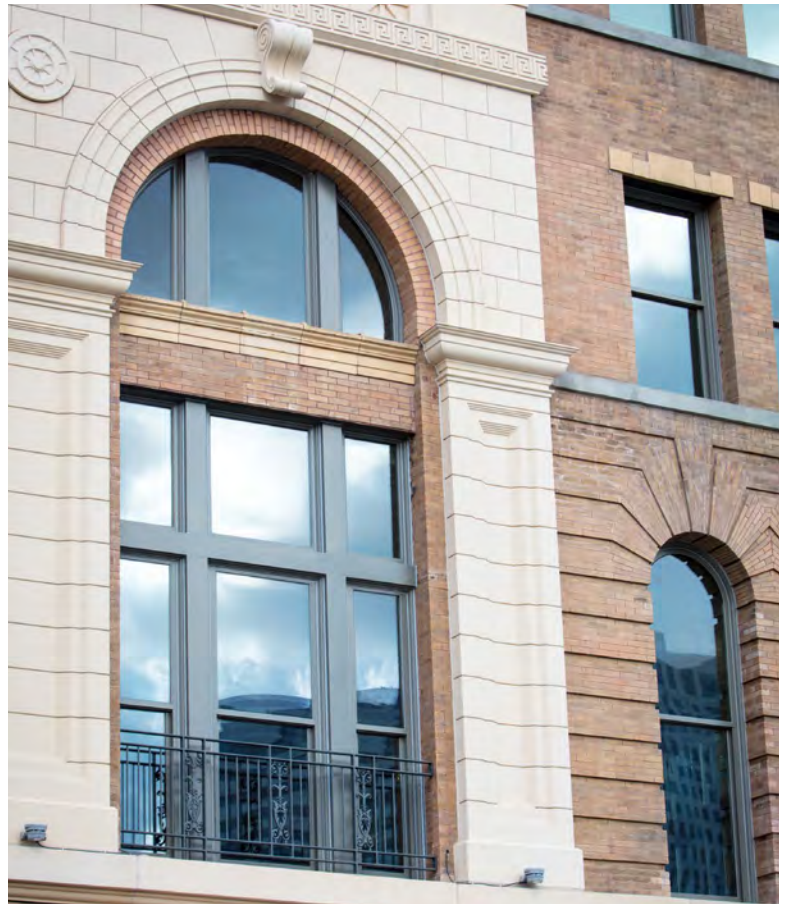
But by the sixties, the building began to deteriorate a sign that it was time to restore the Pythian to its original glory. A community consortium, headed by Green Coast Enterprises, noted the building's prime location in New Orleans was rapidly growing downtown district, and saw a unique opportunity.

Winco was there to help revive this important cultural landmark. Our 3250 Steel Replica historic windows recreate the look of the original windows and add structural performance, hurricane resistance and acoustic benefits that will last for decades to come.

Today, the Pythian captures the prestige of its early 20th century design with the advancements of modern architecture. The 10-story high-rise was redeveloped for residential and commercial use, meeting LEED Silver standards for new construction. Craftsmen carefully restored the masonry, cast stone, and ornamental terra cotta.

The first three floors provide 20,000 sq. ft. of commercial and retail space, including an open food market. The top six floors feature 69 workforce and luxury apartments, with a tenth-floor roof deck.

The Pythian's central location close to City Hall, Duncan Plaza and the French Quarter carries on its New Orleans tradition of bringing people together.



**Ready for the Perfect Window?**  
**Contact Us About Getting a Free Project Consultation.**

