



Sustainable Design





UConn | Hartford Times

Hartford, CT

PAGE 6



801 Skinker

St. Louis, MO

PAGE 12



Pinellas County Control Center

Largo, FL

PAGE 8



Stephens Garage

New Orleans, LA

PAGE 14



The Pythian

New Orleans, LA

PAGE 10



Tuttle Building Annex

Atlanta, GA

PAGE 16



Building a Green Future

PRESERVING YOUR VISION

Crafting Architectural Window Solutions

Green Commitment

Ecological responsibility is important to us as we strive to minimize our impact on the environment through sustainable manufacturing practices. In addition to recycling all scrap aluminum and paper, we use recycled materials — many of which are sourced locally — to make our windows.

Winco is committed to operating its facilities in environmentally friendly manners as well as manufacturing window products that help our customers obtain the highest possible level of certification.

Winco also promotes LEED certification through its products to help clients achieve more energy-efficient buildings.

Know what to look for when choosing energy-saving windows?
[Download the guide now!](#)

UConn | Downtown Hartford Campus

Hartford, CT

Winco Helps Revitalize the Historic Hartford Times Building

Originally established in downtown Hartford in 1939, UConn moved to its West Hartford campus in the seventies. Now, the school has chosen a key destination for its downtown homecoming - the historic Hartford Times Building.

To bring the Hartford Times building’s 1920’s architecture up to date with state of the art technology, historic preservation consultants at Wiss, Janney, Elstner Associates, Inc. and Robert A.M. Stern Architects LLP called on Winco’s northeastern reps, True Enterprises during the budget and design stages of the project.

Winco’s 3250 Steel Replica are designed for historic replication projects, just like the one at UConn,” says Bill True, president of True Enterprises. “The windows offer wind protection, energy savings, and most importantly for a college campus, noise control.” The 3250 Series frames and vents come fully factory glazed to reduce field labor and cut costs.

Certified LEED Gold by the U.S. Green Building Council (USGBC)

PROJECT DETAILS

Systems Provided

Series
3250 Steel Replica

Market
Education | University



Pinellas County Emergency Response and Control Center

Clearwater, FL

Emergency Command Center Features Tornado Resistant Windows

The modern two-story operations building, is constructed of reinforced tilt-wall concrete precast wall panels, with a flat concrete composite roof and with structural steel interior. It is a fully-equipped emergency storm shelter.

The sprawling multipurpose structure has achieved LEED GOLD certification by the United States Green Building Council (USGBC). All Winco tornado impact windows are made with reinforced aluminum frames with a 1-1/2-inch glazing leg. Laminated interlayer and polycarbonate sheets can save property and lives. They also provide outstanding protection from noise, wind and water infiltration, as well as energy saving thermal ratings of 0.35 U-Value or better. Operating models are also available from Winco.

Certified LEED GOLD by the U.S.Green Building Council (USGBC)

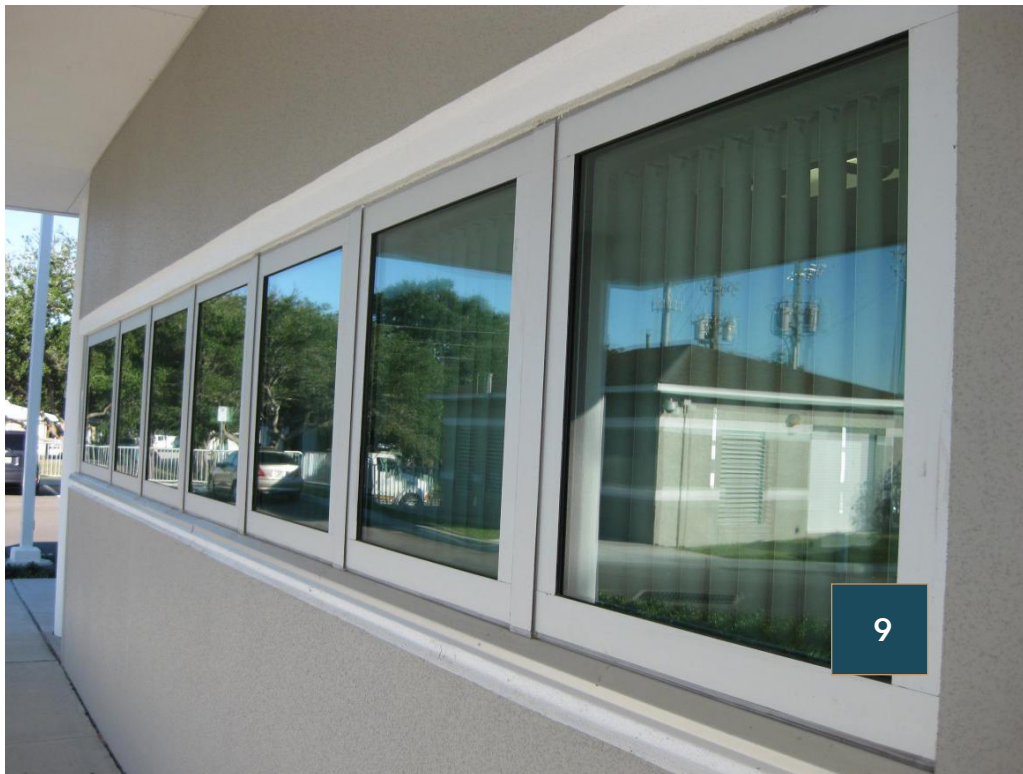
PROJECT DETAILS

Systems Provided

Series
FEMA 361 - ICC 500 Tornado

Market
Government

Features
Tornado Resistant



The Pythian

New Orleans, LA

The Pythian Apartments celebrate New Orleans’ past

Winco was there to help revive this important cultural landmark. Our 3250 Steel Replica historic windows recreate the look of the original windows and add structural performance, hurricane resistance and acoustic benefits that will last for decades to come.

Today, the Pythian captures the prestige of its early 20th century design with the advancements of modern architecture. The 10- story high-rise was redeveloped for residential and commercial use, meeting LEED Silver standards for new construction. Craftsmen carefully restored the masonry, cast stone, and ornamental terra cotta.

LEED Silver Certified

PROJECT DETAILS

Series Provided

Series
3250 Steel Replica

Market
Commercial

Features
Hurricane Resistant



801 S Skinker Blvd

St. Louis, MO

Hi-rise window replication project combines dramatic energy savings, regal park-side views

Built in 1960 The 801 South Skinker Boulevard Building in St. Louis is an example of International Style Architecture inspired by modernist architect Mies Vander Rohe.

When the building was built in 1960, energy was inexpensive. With today's rising energy costs, the owners had to do something to improve window efficiency. The original window glazing system – non-thermally broken, clear monolithic glass – was badly outdated and inefficient.

The building's 739 original windows were replaced with Winco 1450 Series thermally broken aluminum windows with high performance insulated low-e glass. Winco customized this historic replication window system to precisely match the appearance of the building's original windows. Gateway Window Erectors, St. Louis, installed the 4"-deep fixed Winco architectural aluminum windows with project-in hopper vents. The floor-to-ceiling windows are 5' wide by 8-1/2' tall.

"We're on track for \$100,000 in building energy savings in the first year," says Alan Hamilton, resident member of the co-op's board of directors.

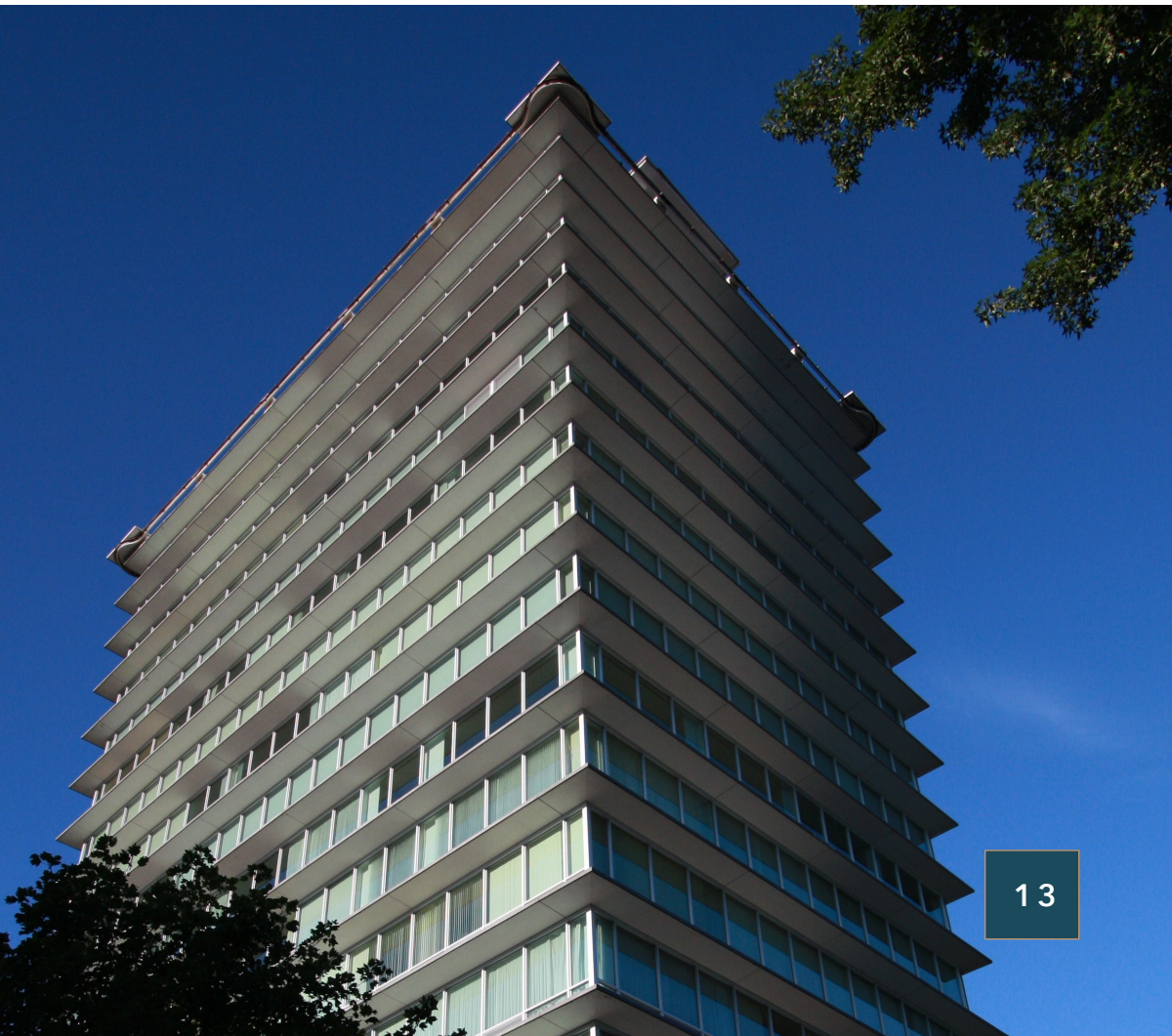
PROJECT DETAILS

Systems Provided

Series
1450 & NC-82 Terrace Door

Market
Multi Family/Residential

Features
Window Wall



Stephens Garage

New Orleans, LA

The Garage Takes Front Door Service to a Whole New Level with Car Elevators

WINCO's 3250 series Steel Replica windows were installed side-by-side around The Garage's entire second floor, restoring the look of the dealership's original windows. Today they are set with laminated hurricane glass and trimmed in a clear anodized finish. As a throwback to the building's original use, roll-up garage doors set bedrooms apart from the rest of the living space. The Garage includes a rooftop pool and sun deck, as well as 21,000 square feet of commercial space on the main level.

The Garage has been awarded LEED Certification.

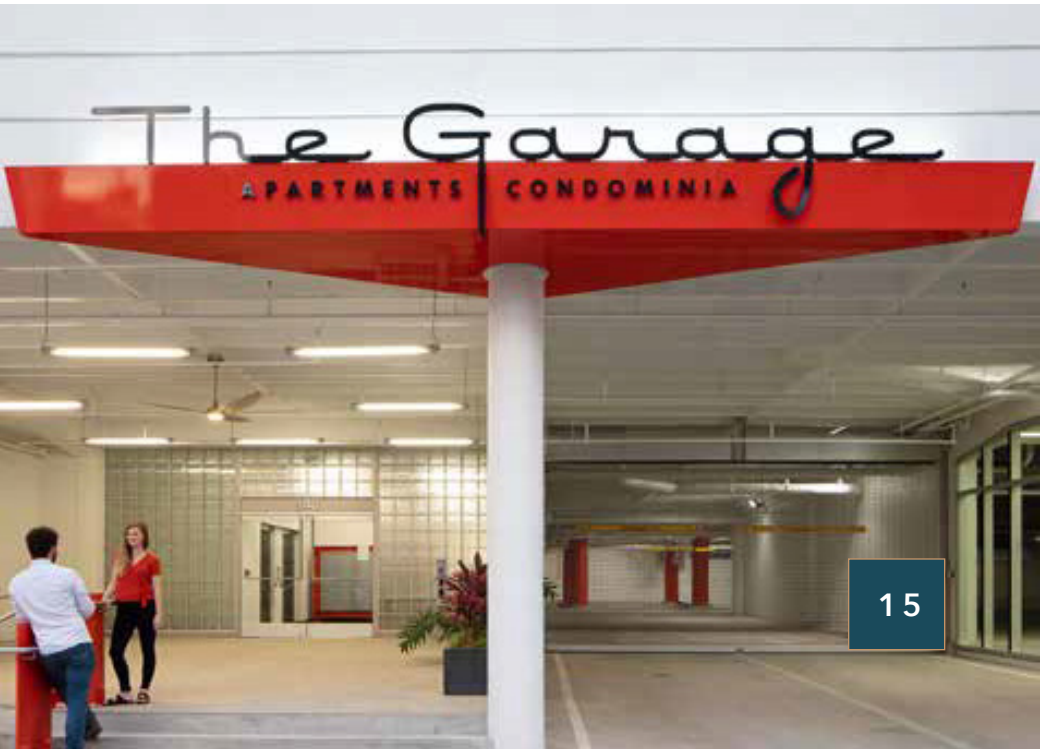
PROJECT DETAILS

Series Provided

Series
3250 Steel Replica

Market
Multi-Family/Residential

Features
Hurricane Resistant



Tuttle Courthouse Annex

Atlanta, GA

Historic Atlanta Federal Building Posed Architectural, Structural and Blast Protection Challenges

Built in 1920, The Tuttle Annex is a five-story timber frame building with red triple-brick walls. Meeting modern thermal performance, GSA blast mitigation and local historical requirements posed a unique design and fabrication challenge. The new fixed heavy commercial windows had to closely emulate the sightlines, meeting rail, muntin, and sloped putty aesthetics of the original wood double hung windows.

Custom modified Winco Series 1450S historic aluminum fixed windows filled 207 openings with 328 engineered units that met GSA blast protection requirements and architectural replication standards

Fiberglass epoxy reinforced the structures walls to handle the blast loads.

Aesthetic details include exterior applied aluminum muntins that emulate the original wood windows’ true divided lites with sloped putty glazing for historical architectural accuracy.

LEED silver certification by the United States Green Building Council (USGBC)

PROJECT DETAILS

Systems Provided

Series

1450S

Market

Government

Features

Security/Blast Resistant





Winco Window Company

P: 800-525-8089

Email: sales4@wincowindow.com

wincowindow.com