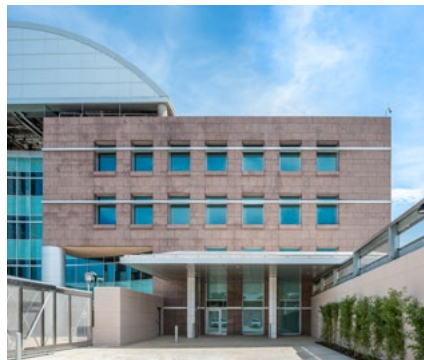




Strawberry Hill Behavioral Health Hospital

Kansas City, KS



Winco's 8800 Retrofit windows provide safety and patient control

What was once a vacant government office building in downtown Kansas City, Kansas, has been transformed into a beautiful, welcoming 48-capacity in-patient care facility to treat mental and behavioral health. The University of Kansas Health System opened its nationally recognized mental and behavioral center in the Strawberry Hills neighborhood. From the four-story atrium to the diverse therapy rooms to the private resident rooms, the atmosphere is open and approachable.

PROJECT DETAILS

Systems Provided

Series

8800 Retrofit

Market

Medical

Features

Human Impact Resistant

Project Team

Owner

University of Kansas Health System

Architect

CannonDesign

Glazing Contractor

Flynn Kansas City

Representative

Joe Dietz

Photography by

Laura Peters at Cannon Design



Patient safety was top of mind when designing the facility. With decorative, hard floor coverings, tranquil wall colors, and simply designed furnishings, designers ensured a bright and healing environment. A key aspect of the plan is the Winco's 8800 Retrofit window series that are used in the patient rooms.

Oversized for expansive views, the windows have ½" polycarbonate security glass on the interior with built-in blinds. Patients can allow as much or as little natural daylight into their rooms by using a thumb turn control knob to open or close the blinds.



Laura Lucht, Executive Director of Mental and Behavioral Health, at the University of Kansas Health System, noted that the windows are beneficial to the health and well-being of patients while delivering a "home-y" aesthetic to the rooms.

Underneath the streamlined design, Winco engineered the window frames with enough strength to withstand human impact ratings of 2,000 ft. lbs. Energy efficient windows with life safety features that protect patients make the 8800 Retrofit series window an ideal solution for healthcare projects.

