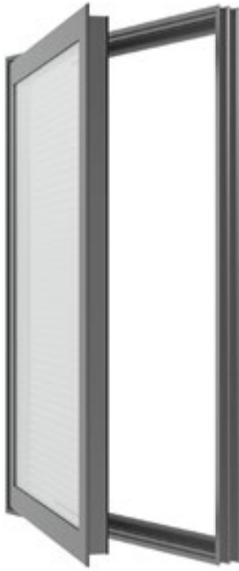




Blind Sash

Protective Window Insert
Fixed



Product Overview

Winco's Blind Sash features a minimal frame depth designed to fit seamlessly within existing openings, making it an ideal choice for both new installations and retrofits. It serves as a versatile solution for curtainwall and storefront applications, enhancing performance with optional integral blinds.

GREEN COMMITMENT

HISTORIC REPLICATION

ENERGY SAVINGS

NOISE CONTROL

BLAST SHIELD

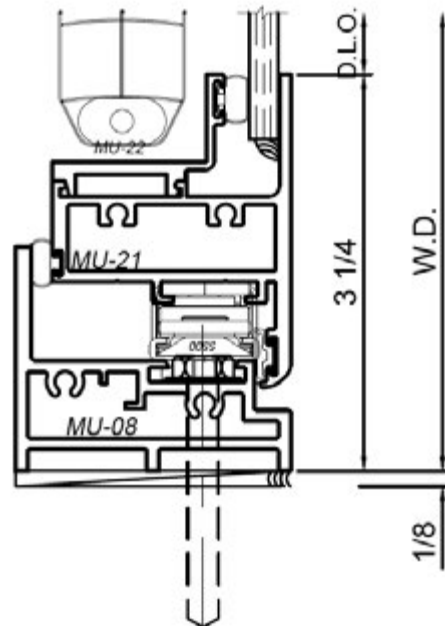
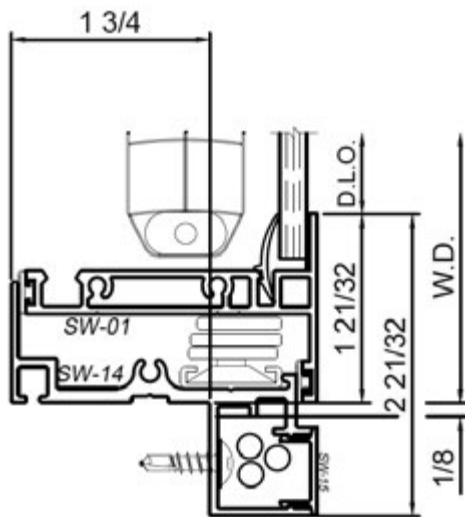
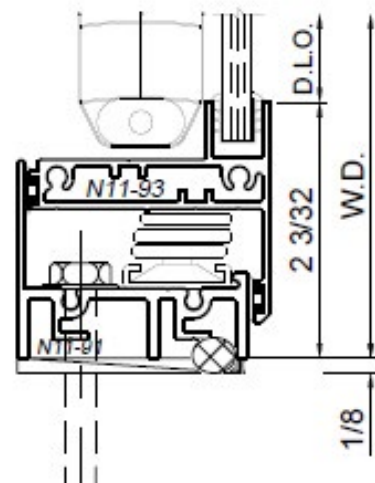
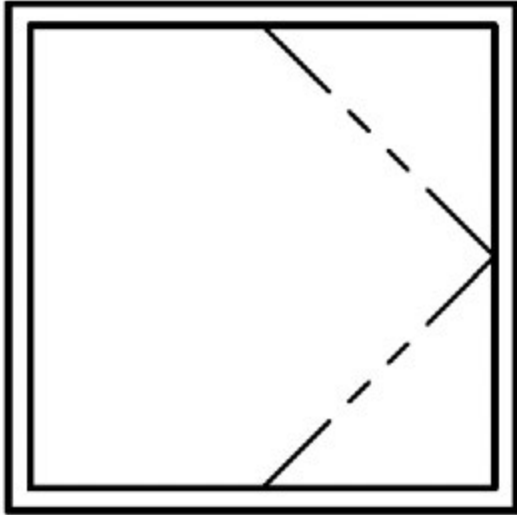
FORCED ENTRY

Features & Custom Options

- Dual glazing with optional integral blinds providing dynamic light control
- Minimal framing to fit within new or existing openings
- Improves air infiltration, thermal and acoustical performance
- Optional hinge access
- Optional custodial access hardware
- Several slip-clutch blind tilt control knob types available
- Easy installation
- 5/8" or 1" between-glass venetian blinds to reduce glare and improve privacy
- Hard wired or wireless
- Operation can be powered and/or controlled by the sun
- Bottom up top down blind options
- Solar shade options
- Remote controls programmable



Blind Sash Detail Drawings



Winco Window Company
6200 Maple Avenue
St Louis, MO 63130

TESTING: Our products meet stringent testing requirements of both the American Architectural Manufacturers Association (AAMA) and the National Fenestration Rating Council (NFRC) standards and certification.

VER: 012025