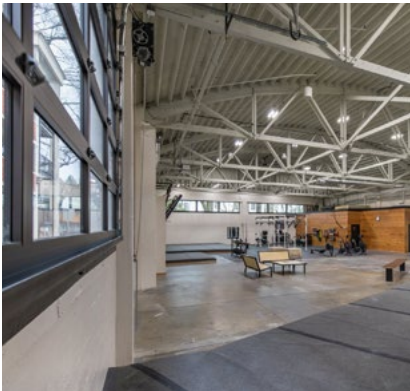




# The Circuit Gym

Eugene, OR



## Winco's 3250 Series Steel Replica windows put the spotlight on climbing

Bouldering—rock climbing without any ropes on manmade walls ranging from 10 to 20 feet tall—has ascended in popularity. The newest and largest Circuit Bouldering Gym in Eugene, Oregon, is set up in a former Firestone building on the corner of 11th Avenue and Pearl Street. The 20,000 sq. ft. Art Deco stucco building was built in 1930 and served as a storefront for Firestone Tires until 2020.

### PROJECT DETAILS

#### Systems Provided

##### Series

3250 Steel Replica

##### Market

Commercial

##### Features

Historic Replica

#### Project Team

##### Owner

Coleman Bouldering LLC.

##### General Contractor

Andy Coleman of Coleman Bouldering LLC

##### Photography by

The Circuit Gym

##### Representative

Gantt Miller IV & Brittnee Bauman





The site was bought and rehabbed in 2024 by Andy Coleman, owner of Coleman Bouldering LLC. Eugene's Circuit Bouldering Gym stays true to the building's original architecture, retaining the use of oversized storefront windows replaced with Winco's 3250 Series Steel Replica windows. With dark bronze trim and multiple grids, the windows are a standout feature against the cream-colored exterior and interior walls. Daylight floods the climbing space, allowing climbers to enjoy a bit of the outdoors inside while climbing.

The unique facility offers a range of climbing terrains and more than 200 routes for climbers of all abilities. At least 25 new routes are set up every week with colorful climbing holds. The interior is bright and welcoming, featuring a fitness area for weights and cardio as well as gathering spaces at the handmade ping-pong table and the bar. Benches and barstools were made with the reclaimed metal from the building.

The Circuit Bouldering Gym is a quintessential mix of old and new, bright and bold, serene and social.

