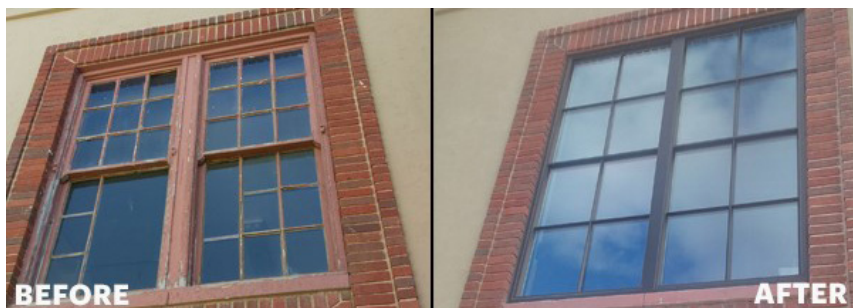




Highland High School

Albuquerque, NM



This School is Breaking Bad Cool

Not many high schools can boast that an episode of the popular TV series "Breaking Bad" was filmed in its gymnasium. The historic Highland High School in Albuquerque, New Mexico, has been the location for a number of films and television shows. The gym has been a hot spot — serving as location for the 2017 film "Logan" and a Netflix original series, "Daybreak," which was filmed during the 2018-2019 school year. Highland High is popular with movie producers because of its historic architecture and welcoming tax credits from the State of New Mexico.

PROJECT DETAILS

Systems Provided

Series

3250 Steel Replica

Market

Education | K-12

Project Team

Architect

SMPC Architects

General Contractor

Enterprise Builders

Glazing Contractor

Southwest Glass & Glazing, Inc.

Photography by

Building exterior courtesy of Mattophoto
architectural photography



So when it came time to preserve the look of the historic character of the school gymnasium, WINCO SMPC Architects maintained the iconic stature of the façade, while creating a modernized gym. Paramount to the design are WINCO's 3250 Steel Replica Windows with a Solarban 72 Starphire insulated, laminated glass. The windows are anodized.

"Highland High School is one of Albuquerque's oldest high schools with a rich, engaging history. The renovation of the gym, including the installation of new windows, will allow more memories and more history to be made in this beloved school for generations to come," says Karen Alarid, Albuquerque Public Schools was called in. "The WINCO windows were selected to retain the original sightline aesthetic, as well as their ease of maintenance," says Don Walker, Field Superintendent, Southwest Glass & Glazing, Inc. Executive Director of Capital.

